

## IMPORTANT DATES TO REMEMBER

**15 August** - P & C Meeting

**16 August** - Plan It Youth

**16 August** - Stage 3 Enrichment Program

**17 August** - Stage 3 Enrichment Program

**21-23 August** - Yr 8 Aussie Bush Camp

**23 August** - Stage 3 Enrichment Program

**24 August** - Stage 3 Enrichment Program

**24-25 August** - RSA / RCG Course

**25, 26 & 27 August** - Upper Hunter Show Youth Cattle at Muswellbrook

## OFFICE OPENING HOURS

Please be aware the office is open Monday to Friday between 8:00am and 4:00pm. Outside office hours a message may be left on the school answering machine. Parents and caregivers are reminded an appointment is necessary before meeting with teachers as they have class, playground duty and other commitments during the school day.

**P & C  
Meeting**

The next P&C meeting will be held on the 15th August at 6:00pm in the interview room at the Front Office. All welcome to attend.

**RESPECT  
RESPONSIBILITY  
COMMITMENT**

# RUTHERFORD TECHNOLOGY HIGH SCHOOL NEWSLETTER

11th August 2017

Email: [rutherford-h.school@det.nsw.edu.au](mailto:rutherford-h.school@det.nsw.edu.au)

[www.rutherfordhs.nsw.edu.au](http://www.rutherfordhs.nsw.edu.au)

Telephone: 4932 5999

Fax: 4932 8166



## SECRETARY FOR A DAY

Talented students from across NSW acted as education secretaries this week as part of the 2017 Secretary for a Day program. Students shadowed senior officers from NSW Department of Education, had a round table discussion with Mark Scott and visited Parliament House. Jacinta Mangnall from Year 10 was one of only 20 students from across the state selected to be part of this program. Jacinta shadowed Lila Mularczyk, Director, Secondary Education.



**Congratulations!**



## SENIOR EXECUTIVE REPORT

### EDUCATION WEEK

Last Wednesday night we celebrated education week with our partner primary schools. Staff, students, community members and programs were recognised for their achievements in contributing towards public education.

Those recognised from RTHS were:

**Student** : Ashley Fry

**Teacher** : Kegan Daly

**Non-teaching staff** : Mary-Kate Ferguson

**Community** : Maxine Creek

**School Program** : Targeted Football led by Blair Newham

**Aboriginal Education** : Skye McGrady-Munro

Simone Hughes was presented with the Rutherford Learning Community leadership award in recognition of her strong leadership of learning community programs over the last nine years.

Another highlight of the evening were the excellent creative performances by students from each school and the introduction of the combined choir of 100 students at the end.

A big thank you to Mrs Hughes for her organisation, Mr Wirth and Miss Walters, Mr Delforce and the students who helped with sound, lighting and backstage. The food was excellent thanks to Mrs Smailes, Mrs Keath and the Hospitality students.

This evening also saw the launch of our new learning community logo. All schools in the local management group worked together to ensure the logo was representative of our seven schools.



***Skye McGrady - Munro***



***Mary - Kate Ferguson***



***Blair Newham, Simone Hughes, Ashley Fry, Maxine Creek and Kegan Daly***





# Rutherford Learning Community

The Rutherford Learning Community proudly nurtures children from Rutherford Technology High School, Rutherford Public School, Telarah Public School, Gillieston Public School, Lochinvar Public School, Branxton Public School and Greta Public School and is able to offer a true Preschool to Year 12 Public Education. The Department of Education Preschool operating as part of Telarah Public School is now taking enrolment applications for 2018 and is looking to enrol more children who will attend its partner primary schools for kindergarten in the years to come.

The RLC has outstanding transition and leadership programs supporting students at throughout their education K-12 to ensure academic, social, sporting and cultural success. All partner schools have a strong focus on continuous improvement and are always looking for ways to improve student outcomes and better service our community.

Partner schools would like to acknowledge the hard work and commitment of Rutherford Technology High School to host the awards evening and thank them for their support of Education Week activities within the Learning Community.

I Learn, We Learn, celebrating the commitment of the NSW Department of Education to ensure that every student, every teacher, every leader and every school improves every year.

**Ed.  
week**  
Jul 31 - '17  
Aug 04 '17

## RLC Education Week Awards 2017 – Wednesday 2nd August

Excellence in Student Achievement:	
Rutherford Technology High School:	Ashley Fry
Rutherford Public School:	Ava Jankovic
Telarah Public School:	Kyle McQuillan
Lochinvar Public School:	Phoebe Battersby
Branxton Public School:	Matthew Wenham
Greta Public School:	Emily Whittick
Gillieston Public School:	Katie-Rose Harwood
Excellence in Teaching:	
Rutherford Technology High School:	Kegan Daly
Rutherford Public School:	Paulette Evans
Telarah Public School:	Alexandra Stewart
Lochinvar Public School:	Nicole McCutchan
Branxton Public School:	Lisa Kracyla
Greta Public School:	Lauren Main
Gillieston Public School:	Gillian French
Outstanding contribution by a school community member to the school and/or region:	
Rutherford Technology High School:	Maxine Creek
Rutherford Public School:	Zofia and Lloyd Harris
Telarah Public School:	Shirley Ernst
Lochinvar Public School:	Anne-Marie Medway
Branxton Public School:	Leigh Lovell
Greta Public School:	Kevin Milford
Gillieston Public School:	Rebecca Dougherty

School Achievement Award:	
Rutherford Technology High School:	Targeted Football Program
Rutherford Public School:	School Breakfast Program
Telarah Public School:	TPS Facility Dog Program
Lochinvar Public School:	Learning Support Program
Branxton Public School:	Positive Behaviour for Learning
Greta Public School:	Garden Gurus
Gillieston Public School:	GPS Book Club
Outstanding contribution by a non-teaching member of staff:	
Rutherford Technology High School:	Mary-Kate Ferguson
Rutherford Public School:	Jane Wilkinson
Telarah Public School:	Mary Juratowitch
Lochinvar Public School:	Sharon Clifton
Branxton Public School:	Kelly Thomas
Greta Public School:	Janene Ballard
Gillieston Public School:	John Crouch
AECG award for an Aboriginal Student:	
Rutherford Technology High School:	Skye-McGrady Munro
Rutherford Public School:	Stuart Longbottom
Telarah Public School:	Roman Lobos
Lochinvar Public School:	Tejay Grady
Branxton Public School:	Mia Paget
Greta Public School:	Caleb Edwards
Gillieston Public School:	Skye Adam

Learning Community Leadership Award going to Simone Hughes, Deputy Principal at Rutherford Technology High School in appreciation of her significant leadership of many Learning Community Initiatives. Mrs Hughes has been instrumental in building strong partnerships between all partner schools in the Learning Community.

## School Highlights for Education Week

**Awards Evening at Rutherford Technology High School Wednesday 2nd August 5.30pm. Performances from all schools and the first Rutherford Learning Community combined choir event.**

### Telarah Public School

- Open Classrooms Monday afternoon from 2.20pm
- Choir and Preschool performing at the opening of the International Slow Food Conference and Australia's first Earth Market on Thursday.

### Rutherford Public School

- Monday 31/8/17 - 9:30am Education Week Assembly, 10:00am Open Classroom, Week long STEM challenge in each grade.

### Greta Public School

At Greta Public School our proudest moments come from the everyday learning in the classroom. Families are invited to our school on Wednesday afternoon from 2pm until home time to join their children in the classrooms to join in with our learning activities.

### Lochinvar Public School

Wednesday 2nd August from 10am -assembly, open classrooms and picnic lunch then Science show in school on Thursday

### Branxton Public School

Friday 02/08/2017 -Welcoming the community to a special assemblé at 11.35am. Showcasing student talents including Public Speaking, Dance from junior and senior dance groups, choir and Starstruck performers.

### Gillieston Public School

Celebrating Education Week and Book Week together in Week 5 on Thursday 17th August. Our Leaders will also be attending the local government breakfast with their student leader colleagues from schools in the Maitland LGA.

To find your local public school visit <https://education.nsw.gov.au/school-finder> to use the NSW Department of Education School Finder.



RUTHERFORD  
TECHNOLOGY  
HIGH SCHOOL

PHONE:  
4932 5999



BRANXTON  
PUBLIC SCHOOL

PHONE:  
4938 1214



GILLIESTON  
PUBLIC SCHOOL

PHONE:  
4932 7542



GRETA  
PUBLIC SCHOOL

PHONE:  
4938 7331



LOCHINVAR  
PUBLIC SCHOOL

PHONE:  
4930 7223



RUTHERFORD  
PUBLIC SCHOOL

PHONE:  
4932 5900



TELARAH  
PUBLIC SCHOOL

PHONE:  
4932 8477



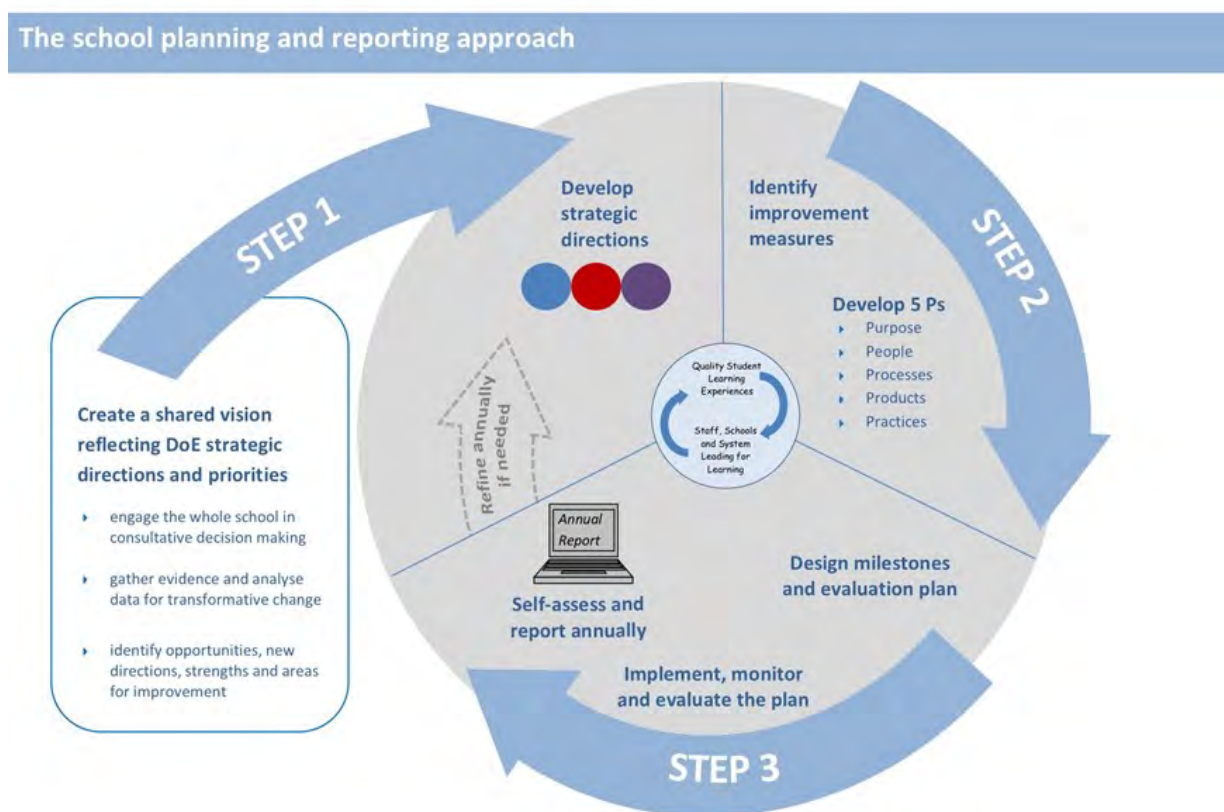
## SENIOR EXECUTIVE REPORT

### STRATEGIC PLANNING

Over the course of the next two terms, we will be completing a number of evaluations with staff, students and parents, to inform our planning for the next three years. We will consult with all stakeholders to inform this planning. Parents, through the many activities we hold, will have the opportunity to provide feedback, initially on our evaluations and throughout the planning and implementation phase of our new school plan. The information gathered through parent learning groups, parent information sessions, evaluations from staff and material gathered from student forums, will be used to inform the future directions we take as a school. As a school, we will develop a shared vision and identify the three strategic directions that will form the basis of the upcoming three year planning cycle.

### TELL THEM FROM ME SURVEY

This Term, our school will be participating in the *Partners in Learning* parent survey, another part of the *Tell Them From Me* suite of surveys (student, teacher and parent surveys) on student engagement. The survey asks parents and carers questions about different factors that are known to impact on student wellbeing and engagement. Running this survey will help our school understand parents' and carers' perspectives on their child's experience at school. These include: communication between parents/carers and staff, activities and practices at home and parent/carer views on the school's support of learning and behaviour. This valuable feedback will help our school make practical improvements.



The survey is conducted entirely online on smartphones, ipads, tablets, laptops or computers. The survey will typically take 15 minutes or less to complete and is completely confidential. The parent survey will be conducted between 21 August and 13 October. Although participating in the survey is entirely voluntary, your responses are very much appreciated.

Our school will provide further information about how to access the survey. In the meantime, more information about the survey is available at: <http://surveys.cese.nsw.gov.au/>

### LATE ARRIVALS

School commences at 9.00am and all students are expected to be at school by this time. Unfortunately, to many students arrive at school well after this legal starting time. Not only does this generate workload for the administration staff but students are missing out on vital learning time and sharing of news and information that can impact on them. Staff will continue to visit Rutherford shops and move students on to ensure that they get to school on time. Parents need to encourage students not to go to the shops but to come directly to school. The school canteen is open from 8.00am to serve students. The grandstand on Max McMahon oval is out of bounds before school with staff regularly visiting and moving students into school grounds.

## **SENIOR EXECUTIVE REPORT (contd)**

### **HSC**

Term 3 is always a busy time of the year and a culmination of schooling for Year 12 - itinerant marking of projects and performances, completion of oral/aural tests and final coaching by staff, in preparation of all students for the Higher School Certificate.

The school is able to support Year 12 with counselling from their Year Advisor, Mentors, Head Teachers and School Counsellors as required. It is vital to keep Year 12 working steadily whilst reinforcing that this is the last term of their schooling. Please ensure that your child has a study program in place for the HSC. If you feel your child needs support in this area please contact the Year Advisor, Mr Buckie or Senior Study Coordinator Mrs Young.

This term, some students will undertake part of their HSC for courses which include a project, submitted work or performance. The following subjects have submission dates during term 3:

Society & Culture PIP  
Industrial Technology Major Projects  
Drama Projects  
Visual Arts Body of Works  
Music Submitted Works  
Textiles

Students should check with their classroom teacher or look on the NESA site for submission dates.

HSC Assessments and Submitted Works-Advice to Parents can be found at:

[http://www.boardofstudies.nsw.edu.au/hsc\\_assessment\\_policies/hsc-assessments-works-advice-parents.html](http://www.boardofstudies.nsw.edu.au/hsc_assessment_policies/hsc-assessments-works-advice-parents.html)

### **SPORTING SUCCESS**

Congratulations to our sporting teams that have been achieving great things on the sporting fields. I would also like to thank the staff and parents for their support of the teams, including the training and the transporting of students to venues. Without this support the task of students representing Rutherford Technology High School at these events may have been much more difficult to organise.

### **SOCIAL MEDIA**

Sexting is the sending of provocative or sexual photos, messages or videos. They are generally sent using a mobile phone but can also include posting this type of material online. While sharing suggestive images or text messages may seem like innocent flirting or be considered funny for young people, sexting can have serious social and legal consequences.

<http://www.schoolatoz.nsw.edu.au/technology/using-technology/sexting-what-every-parent-should-know>

- Sexting involves the use of a mobile phone and the transmission of a sexual image or message between two people.
- Educate your child about what it is and why it's illegal.
- Give your child suggestions of what to do if they receive a sexting message.
- Discuss the consequences of sexting and the damage that can be done to reputations in the long term on the internet.

More information and strategies can be found at:

<https://www.esafety.gov.au/education-resources/iparent/online-risks/sexting>

- Talk to your children about the potential social, academic, employment and legal implications of posting inappropriate material of themselves or others online.
- Encourage them to think twice before they post sexualised photos and consider the fact that others might view what they post.
- Remind them to delete any sexual content they receive from others and avoid forwarding this type of content.
- Remind them to consider the feelings of others when taking photos and distributing any content by mobile phone or online.
- Seek professional support if you are worried that your child is vulnerable.
- If you are concerned that a sexting incident may be a criminal matter, contact your local police.

<https://kidshelpline.com.au/teens/get-help/webchat-counselling/>

### **SCHOOL UNIFORM**

Our school winter uniform, on the whole, looks good. There are a small number of students who are still wearing incorrect jumpers. Please make sure that your son/daughter are wearing either the school knit jumper or school hoody to school.

I would also like to remind parents that jeans and tights are not a part of our school uniform. Students need to be wearing the tracksuit pants or trousers available from our uniform shop.

The uniform shop is open every Tuesday and Thursday morning from 8am-12pm

**Simone Hughes**  
**Deputy Principal**

### TERM 3: WEEK 2 ASSEMBLY – MATHEMATICS PBL AWARDS

<b>Year 7</b> Lili Botfield Natasha Germon Tanneka Goff Justine Pacamalan Shennai White	<b>Year 8</b> Janeyah Freeman Madisyn Grigull Kasie Moy Nunia Palu Jacob Pemberton Madelyn Stevenson
<b>Year 9</b> Tahlia Nairne Hossain Patwary Phoebe Quilty Amelia Sutcliffe	<b>Year 10</b> Layla Cassar Madison Christiansen Abby Collyer Brian Gould Jacinta Mangnall Rhys Tickle Beth Waeger-Seymour
<b>Year 11</b> Kimberley Delaney Jackson Taylor Phoebe Wrench	<b>Year 12</b> Lily Barnett Tiffany Burbage Georgia Horne



### HELPFUL HINTS FROM the LaST

#### Continuing Commonly Confused Words

<b>peace</b>	quiet and tranquility; freedom from disturbance
<b>piece</b>	a portion
<b>quiet</b>	opposite of noise
<b>quite</b>	completely, entirely
<b>sight</b>	the act of seeing
<b>site</b>	location or position
<b>cite</b>	to quote or refer to

John made **peace** with his brother. and they stopped arguing.

Save me a **piece** of birthday cake  
The room was **quiet** after the baby fell asleep.  
After the 5km run I was **quite** tired.  
Grandmother's **sight** has diminished over time.  
A fence was erected at the construction **site**.  
You need to **cite** your resources you used for your assignment.





## **TERM 3: WEEK 3 ASSEMBLY – VET & JAPANESE PBL AWARDS**

### **Business Services**

Year 11 – Amie Richards for Outstanding Effort and Application

Year 12 – Angela Homan for Outstanding Effort and Application

### **Construction**

Year 11 – Cameron Manning for Outstanding personal commitment towards Learning

Year 12 – Ethan Fellows for a Mature approach in all Class Work

### **Hospitality**

Year 11 – Samantha Oakley for Consistency in all Areas

Year 12 – Ava Fellows for Consistency in all Areas

### **Metals and Engineering**

Year 11 – Cameron Manning for Outstanding Effort and Application

Year 12 – Thomas Banister for Outstanding Effort and Application

Year 12 – Zac Collingwood for Outstanding Effort and Application

### **Primary Industries**

Year 11 – Emily Pryor for Outstanding Effort and Application

Year 12 – Nicholas Marquet for Outstanding Effort and Application

### **Retail**

Year 11 – Jorell Hammond for Outstanding Effort and Application

Year 12 – Emmerson Field for Outstanding Effort and Application

Year 12 – Lilly-Bree Humbles for Outstanding Effort and Application

### **Work Studies**

Year 12 – Lorri Cutler-MacGregor for Outstanding Effort and Application

### **Japanese**

Year 8 – Tom Anderson for Outstanding Effort and Application

Year 8 – Samara Harrison for Outstanding Effort and Application

Year 8 – Clarence Lawrence for Outstanding Effort and Application

Year 8 – Hayden Lewis for Outstanding Effort and Application

Year 8 – Wyatt Miller for Outstanding Effort and Application

Year 8 – Courtney O'Connell for Outstanding Effort and Application

Year 8 – Ella Ryder for Outstanding Effort and Application

Year 8 – Cadence Sawtell for Outstanding Effort and Application

Year 9 – Emmanuel Guevarra for Excellence

Year 9 – Tahlia Nairne for Excellence

Year 10 – Sherina Hartley for Excellence

Year 10 – Mikayla Nisbet-Gore for Excellence

Year 12 – Zarnie-Rose Clarke for Outstanding Effort and Application

Year 12 – Emma Woodbridge for Outstanding Effort and Application



## NATIONAL TREE DAY / SCHOOLS TREE DAY

National Tree Day and Schools Tree Day started in 1996 and is coordinated by Planet Ark. These are special days for all to help-out by planting and caring for native trees and shrubs to improve the environment.

School students participate in a special National Tree Day event designed just for children – **Schools Tree Day!**

Schools Tree Day is a wonderful opportunity to get students into nature and install a love for the great outdoors. It can mark the beginning of a long-term environmental program, engaging students in fun, hands on activity that can reinforce their environmental, maths, science and creative arts learning as well as contributing to creating beautiful school grounds and taking care of the planet.

This year, under the guidance of Ms Hull, students in Rutherford Technology High School 7L Science Class participated in Schools Tree Day by planting native ground covers and shrubs kindly donated by Maitland City Council in our school yarning circle.



## TSP FOOTBALL NEWS

The fresh winds have not stopped TSP Football lessons at school. Here are some photos of Year 8 continuing to demonstrate the schools core values with outstanding application of commitment to the program today.

**Blair Newham**

**TSP Coordinator**





## YEAR 10 AND 11 STUDENTS VISIT WILLIAMTOWN RAAF BASE

On the 3rd August Year 10 and 11 students visited Williamtown RAAF Base to learn about careers in the Airforce and the role the Williamtown facility has in protecting Australia and other nations. We were extremely fortunate to have a guided tour of the base and visit three squadrons. We were treated to a briefing and guided tour of the 737 Wedgetail surveillance aircraft with it's pilot and crew, were allowed on to the airfield to look around an F18 Hornet fighter with a 'real-life fighter pilot' and visited the Control and Reporting Unit (3CRU) to understand how the RAAF identifies potential threats to Australia. All students who attended had a fantastic day and had their eyes opened to the great opportunities available in the Australian RAAF. Thank you Williamtown RAAF and Youth Express for organising this excellent experience.

**Toby Butler**  
**HT VET**



## RETAIL THERAPY AT GPT CHARLESTOWN SQUARE

On Friday the 4th of August our Year 12 Retail Services class visited GPT Charlestown Square. The students met in the Centre Management boardroom with Retail Manager (Jason) to discuss the centre's operation, retailers, competitors, security, environmental sustainability, the centre's history, and future directions. The students were then let loose on the rest of the centre completing some fieldwork activities and a little retail therapy. Statistically, every time a customer visits GPT Charlestown Square they spend \$39. On this day, our students ensured it was an above-average day for the retailers!

**Toby Butler**  
**HT VET**



## HSIE REPORT

Where has the year gone? Here we are half way through Term 3 already. This year the HSIE faculty are delivering Stage 6 classes in Legal Studies, Business Studies, Modern History, Ancient History, Society and Culture, Geography, as well as VET Business Services and Retail. Year 12 students are working hard in HSIE in the lead up to the HSC, Year 11 are gearing up to sit their Preliminary Examinations, and their enthusiastic teachers are preparing them well for both. Year 9 and Year 7 are enjoying studying the Geography National Curriculum for the first time this year, and our HSIE teachers are enjoying teaching the new syllabus. Mr Sasha Lenskyj joined the HSIE faculty at the start of Term 2, and he is a welcome addition to our faculty.

**Michele McKenna**  
**HT HSIE**



### **SECRETARY FOR A DAY REPORT**

On Monday 31 July 2017 and Tuesday 1 August 2017, I was in Sydney taking part of 'Secretary for a Day' along with nineteen other students from various public schools across NSW.

As part of the application process, we had to select up to three Portfolio Areas from the NSW Department of Education in order of preference and explain why I would like to participate in this area. Secondary Education was my first preference and of particular interests as my career goal is to become an Industrial Arts Teacher.

Along with, Angus Croak, a student from Coffs Harbour High School, I shadowed the Senior Officer of Secondary Education, Lila Mularczyk. We spent time with Lila observing and participating in the daily operations of the portfolio area. On the Monday, we visited Glenmore Park High School to attend the combined Glenmore Park High School & Tamworth High School Education Week launch and then returned to Bridge Street Office for a workshop luncheon discussing the evolution of artificial intelligence in schools and Anti-Bullying.

Tuesday was another busy day, starting at Bridge Street Office to finish our Anti-Bullying workshop and to take part in and provide feedback of the new Department of Education Anti-Bullying Website. We then visited Parliament House where we went on a guided tour, observed 'question time' in Parliament and had a discussion forum with Rob Stokes, the Minister for Education for NSW including closing of the two days.

The twenty students, all Senior Officers, Mark Scott the Secretary and Rob Stokes the Minister for Education developed a close working relationship in the short period of time with the group responsible for instigating a personalized 'hand shake' as a friendly greeting and a way to connect a close working relationship.

The two days were such a great experience and I thoroughly enjoyed every minute. I have developed some positive and good friendships with students from many schools as well as learning to overcome my fear of public speaking.

Thank you to the staff at Rutherford Technology High School for this once in a lifetime and unforgettable experience.

**Jacinta Mangnall**

**Year 10 Student**

### **CAPTAINS MESSAGE**

The first four weeks of term have gone very fast, and already alot of things crackin' this term!

Last week Anton, myself and the Vice Captains along with Mr Whiting went to a Leadership Breakfast with all of the Student Leaders from our local area from Primary and High Schools. We enjoyed a lovely breakfast, watched an inspiring magician, and the highlight of the day was listening to Mark Hughes address his story, his foundation, and the importance of Leadership.

Last Wednesday we hosted the Rutherford Learning Community Group Education Week Ceremony. We would like to thank all our partner primary schools for a great night and the SRC members who contributed to making the night a success!

Within the SRC, we are working hard in small groups to achieve fundraising, improve attendance within the school, and a surprise the SRC has been working towards for installation of an item within the school, which will benefit all students.

The Leadership positions are well underway for 2017/218 Year 12 Leaders. This is the beginning of a process of interviews and speeches.

Cannot believe Anton and I only have six weeks left of Captain Messages! Thank you for reading, until next edition

**Ashley Fry**

**School Captain**



### **WOOLWORTHS EARN & LEARN**

Woolworths Earn & Learn is back!

Now it is easier than ever to earn valuable resources for our school with benefits such as boosting supplies in classrooms, libraries, music rooms, science labs and also equipment for sport lessons.

It is simple to participate:

From **Wednesday 26 July 2017** to **Tuesday 19 September 2017** (or whilst stocks last) when you shop at Woolworths you can collect Woolworths Earn & Learn Stickers from the checkout operator or through an online order. There will be one Woolworths Earn & Learn Sticker for every \$10.00 spent (excluding liquor, tobacco and gift cards). Place your stickers onto a Woolworths Earn & Learn Sticker Sheet and once the sheet is completed simply place it in the Collection box.

Rutherford Technology High School will have collection boxes located here at the school in the front office and at our local Woolworths stores at Rutherford & Aberglasslyn.





[www.jobjump.com.au](http://www.jobjump.com.au)

Dear Parent,

Your future Career is here.

We would like you to be able to use all parts of the JobJump website to help your son/daughter plan and achieve their Career dreams. It is there to help through to an extra year after their Year 12.

**To register with JobJump**, go to the front screen of the website at [www.jobjump.com.au](http://www.jobjump.com.au)

Click on **I'm New**. On the new screen, enter into the first white box the first letters of your school's name and **when the full name appears just below in blue**, click on your blue school name and it will enter automatically into the first white box.

In the second white box, enter your school password which is:

**enter your school password here**

and click Continue. You then need to enter a few details and set your Personal Password. (Min 6 characters). So whenever you then come back to Login to JobJump, all you will then need is your email address and Personal Password.

**Two things to remember:**

1. If you can't find the career from the list offered that suits your son/daughter, select a career which is in the field they like. For example, they may like the field of Tourism and the idea of having a career in the Tourism industry is not a bad idea. In the listing select 'Travel Agent' because all Tourism careers news will come to you.
2. When you register, remember you can select as many careers as you like from the listing. If your son/daughter changes their mind you can alter the choices at any time by going to the black head at the top right hand side after you are Logged In.

**Watch the tour of JobJump in the brief video entitled 'Learn JobJump fully in minutes'.**

**Go the bottom middle part of the Home page.**

Once you have registered, you can also use all parts of the website to enjoy all of the following:

- ☐ Year 10 subject selection advice across 100 careers.
- ☐ Writing letters, resumes, what to say to an employer, where to find your future employer.
- ☐ A comprehensive digital ATAR and University Course sorter that works hand in hand with the UAC Handbook making life now a breeze for you to search for your chosen courses.
- ☐ Job vacancies for over 100 options based on your school location.
- ☐ Bonus points,
- ☐ Overseas Exchange,
- ☐ Accommodation across all Universities in NSW and their direct links.
- ☐ Earnings across 300 careers.
- ☐ EAS information.
- ☐ Find my Career quizzes.
- ☐ Hobby projects across 100 careers to inspire and engage students in their career.
- ☐ Interactive yearly calendar across all news items which can be personalised to your careers of interest.
- ☐ Undergraduate scholarship sorter across all NSW Universities.
- ☐ Universities Open Days listing and links.
- ☐ Videos across 100 careers.
- ☐ Gap Year and Volunteering opportunities.
- ☐ Alternative entry to University sorter and links across all NSW Universities.
- ☐ Interstate and overseas University admissions centres' links.
- ☐ Work Experience documentation.... and much more.

**We trust you will enjoy using [www.jobjump.com.au](http://www.jobjump.com.au)**



# Tuning in to Teens

## Emotionally Intelligent Parenting



A six-session parenting program  
for parents of adolescents aged 12-18years



Where: Rutherford Primary School  
Weblands St, Rutherford  
When: 9.15am - 11.15am Friday mornings  
11th August to 15th September 2017

Call Rutherford Primary School on 4932 5900 or Rutherford Technology High School on 4932 5999 or email [Mary.ferguson13@det.nsw.edu.au](mailto:Mary.ferguson13@det.nsw.edu.au) to register your interest

Assisting you to learn how to:

- be better at talking with your teen
- be better at understanding your teen
- help your teen learn to manage their emotions
- help to prevent behaviour problems in your teen
- teach your teen to deal with conflict

*Tuning in to Teens* shows you how to help your teen develop *emotional intelligence*.  
Adolescents with higher emotional intelligence:

- are more aware, assertive and strong in situations of peer pressure
- have greater success with making friends and are more able to manage conflict with peers
- are more able to cope when upset or angry
- have fewer mental health and substance abuse
- have more stable and satisfying relationships as adults
- have greater career success
- Emotional intelligence may be a better predictor of academic and career success than IQ.



You must register to attend the course and it is open to any member of the community.





# SHOW CASE 4

## ARTWORK BY LOCAL YEAR 7-12 HIGH SCHOOL STUDENTS SCHOOLS

All Saints College, St Mary's Campus  
All Saints College, St Peter's Campus  
Belmont High School  
Callaghan College, Jesmond Campus  
Cardiff High School  
Dungog High School  
Kotara High School  
Kurri Kurri High School  
Maitland Grossmann High School  
Medowie Christian School  
Merewether High School  
Northlakes High School  
Rutherford Technology High School  
Scone Grammar School  
St Catherine's Catholic College, Singleton  
St Joseph's College, Lochinvar  
St Mary's Catholic College Gateshead  
St Philip's Christian College, Port Stephens

MAITLAND REGIONAL ART GALLERY

230 High St Maitland NSW 2320 | 02 4934 9859 | mrag.org.au

EXHIBITION DATES  
3 June - 10 September 2017

mrag  
MAITLAND REGIONAL ART GALLERY





# Teaching someone to drive can be a **happy** experience.

You can learn all the simple steps on how to teach a learner driver  
at a **FREE** two hour workshop.

The next workshop in your area will be held:

TIME & DATE:	VENUE:	BOOK NOW ON:
<b>Thursday</b> <b>24 August 2017</b> <b>6pm to 8pm</b>	<b>Meeting Room</b> <b>Maitland Gaol</b> <b>John St East Maitland</b>	<b>Road Safety Officer</b> <b>4934 9840</b> <b><u>BOOKINGS ESSENTIAL</u></b>

Helping learner drivers  
become safe drivers



## OPAL Card Information



### Who needs to apply?

An application is needed if the student:

- Has not had a travel pass before
- Is moving from Year 6 to Year 7
- Is changing schools
- Is changing address

### How to apply

- Complete the application at [transportnsw.info/school-students](http://transportnsw.info/school-students)
- Once completed online, this will generate a form which needs to be printed and signed then returned to the school for verification and forwarding to Transport NSW
- Once approved by Transport NSW, the School Opal Card will be sent to the address provided on the application within 10 business days

### To report a lost, stolen or damaged Opal Card

- Go to [www.apps.transport.nsw.gov.au/sssts/reportPass](http://www.apps.transport.nsw.gov.au/sssts/reportPass) and follow the instructions to Replace School Opal Card
- **DO NOT** apply for a new Opal Card
- Please allow up to 10 business days to receive your new card. An email will be sent to your nominated email address that confirms you have ordered a replacement School Opal Card. Please keep this email for your records

For any further enquiries regarding your application,  
please send an email to [concessions@transport.nsw.gov.au](mailto:concessions@transport.nsw.gov.au)  
or contact Transport on 131 500






## Rutherford Technology High School UNIFORM SHOP

### OPENING HOURS:

**TUESDAY  
THURSDAY**

**8:00am - 12noon  
8:00am - 12noon**


ITEM	PRICE	SIZE	QTY	TOTAL INCL GST
<b>Girls</b>				
Jnr Blouse Sky	28.00			
Snr Blouse Lemon	28.00			
Jnr/Snr Girls Shorts	35.00			
Jnr Skirt	48.50			
Snr Skirt	48.50			
Bootleg slacks	39.00			
<b>Boys</b>				
Jnr/Snr Boys Shorts	35.00			
Jnr/Snr Trousers	39.00			
<b>Unisex</b>				
Fleecy Jacket	40.00			
Jnr Polo	29.00			
Snr Polo	29.00			
Elastic Waist Everyday Black Shorts	35.00			
Elastic Waist Everyday Black Long Pants	39.00			
<b>Jumpers</b>				
Jumper	72.00			
<b>Sports</b>				
Jacket	65.00			
Sports Shorts Std	25.00			
Trackpant	38.00			
Sports Polo	35.00			
<b>Others</b>				
Scarf	20.00			
Socks 5pr	20.00			

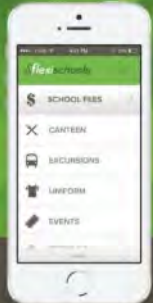


**flexischools**  
**ONLINE ORDERING**

Available 24/7  
Convenient for parents  
Removes paper orders and cash  
FREE Registration

Rutherford Technology  
High School Canteen  
now has 'Flexischools'  
for Online Ordering!





**1,000+ SCHOOLS**  
throughout Australia

**600,000+**  
active customers

**18+ MILLION**  
orders processed

The cash free way to pay.  
Our school now has Flexischools online ordering.  
It's the fast and secure way to order and pay for all  
school services.

**flexischools.com.au**

Take advantage of this convenient new  
service. Go to [www.flexischools.com.au](http://www.flexischools.com.au) and  
click register.

Save time.  
Order online.

Processing orders since  
**2008**

Flexischools allows parents, students and staff to place and pay for orders from home, work or school at any time via their mobile, tablet or computer.

As well as being convenient for parents, the online orders are much faster and easier for the school canteen to process – so it makes everyone's life a little easier!

Flexischools is well established, operating in over 1,000 schools across Australia and having processed over 25 million orders.

**How to Register:**

1. Register for Flexischools by visiting [www.flexischools.com.au](http://www.flexischools.com.au) Add your student, their school and class/year to get started.
2. Top-up your account via Visa, Mastercard, PayPal or Direct Deposit.
3. Make an order by selecting from the range of options available and proceed to make payment for the order listed in your order pad.


**What Does it Cost?**

**Online Ordering Fees:** \$0.29 per canteen order

**Account Top-ups:** **Direct Deposit – FREE**  
(2-3 days to become available in your Flexischools account)

**Visa / Mastercard / PayPal – Surcharge of 15c + 1% of your top up value**  
(immediately available on your Flexischools account)

Need assistance registering, topping up your account or placing orders, please call the Customer Service Team at Flexischools on **1300 361 769**.



## **CANTEEN ROSTER**

<b>Monday 14 August</b>	Volunteer Needed
<b>Tuesday 15 August</b>	Volunteer Needed
<b>Wednesday 16 August</b>	Volunteer Needed
<b>Thursday 17 August</b>	Volunteer Needed
<b>Friday 18 August</b>	Volunteer Needed
<b>Monday 21 August</b>	Volunteer Needed
<b>Tuesday 22 August</b>	Volunteer Needed
<b>Wednesday 23 August</b>	Volunteer Needed
<b>Thursday 24 August</b>	Volunteer Needed
<b>Friday 25 August</b>	Volunteer Needed



**Volunteer Opportunities**

<b>Where:</b>	Rutherford Technology High School Canteen
<b>When:</b>	As often as you can, part or full day!
<b>Hours:</b>	9:00am till 3:00pm (or any part of the day you can manage)
<b>Experience:</b>	Not necessary – everything you need to know can be learnt within a short space of time
<b>Salary:</b>	Plenty of tea and coffee (or juice) and the best of all friendship
<b>Bonus:</b>	Your child/children are happy to see you in their school. You get to meet new people and make good friends within the school community!
<b>Applications close:</b>	NEVER ☺





## **RUTHERFORD TECHNOLOGY HIGH SCHOOL**

### **2017 CANTEEN MENU**

#### **SANDWICHES, ROLLS & WRAPS + SALADS:**

##### **Sandwiches:**

- Chicken Salad	\$4.30
- Salad	\$3.70
- Egg & Lettuce	\$3.70
- Curried Egg	\$2.90
- Vegemite	\$2.90
- Cheese	\$2.90
- Meat	\$2.90
- Ham, Cheese & Tomato	\$3.00
- Cheese & Tomato	\$2.90
- Corn Meat & Pickles	\$3.00

##### **Rolls:**

- Salad Roll	\$4.30
- Chicken Salad Roll	\$4.80
- Ham Salad Roll	\$4.80
- Corn Meat Salad Roll	\$4.80

##### **Wraps:**

- Salad Wrap	\$4.30
- Meat Salad Wrap	\$4.80
- Caesar Salad Wrap	\$4.30
- Chicken Caesar Wrap	\$4.80
*Chicken Tender Salad Wrap (order only)	\$5.00

##### **Salad Box:**

- Salad Box:	Small	\$3.00
	Medium	\$4.50
	Large	\$4.90
- Chicken Salad Box (Large)		\$5.90
- Chicken Caesar Salad Box:	Small	\$3.00
	Medium	\$4.50
	Large	\$6.00

#### **ICE-CREAMS:**

Paddle Pops	\$2.00
Paddle Pop Lemonade Twist	\$1.20
Frozen Yoghurt	\$2.00
Vanilla Buckets	\$1.20
Juice Ice Block	\$1.00
Milo Cups	\$2.90
Moosies	\$1.00

#### **EXTRAS:**

Bread Roll (extra) / Buttered Bread	\$0.90
Toast Sandwich (extra)	\$0.50
Extra Fillings	\$0.40
Butter / Mayo / Mustard	\$0.20

#### **HOT FOOD MENU:**

Garlic Bread	\$1.10
Plain Pie	\$2.70
Potato Pie	\$3.00
Cheese & Bacon Pie	\$3.00
Sausage Roll	\$2.60
Hot Dog	\$2.50
Chicken Chippies (6)	\$3.00
Chicken Nuggets (6)	\$3.00
Chicken Burger	\$3.60
Chicken Burger Salad	\$4.30
Chicken Gravy Roll	\$3.60
Cheese Burger	\$3.60
Cheese Burger Salad	\$4.30
Roast Beet & Gravy Roll	\$3.60
Pizza Slab	\$2.80
Cheese & Bacon Roll	\$2.00

#### **SNACKS:**

Deli Rock Chips	\$1.00
JJ's Chips	\$1.00
Banana Bread	\$2.60
Finger Buns	\$1.60
Muffins	\$1.60
Fresh Fruit Salad (Term 1 & 4)	\$2.50
Fresh Water Melon (Term 1 & 4)	\$2.50
Eucalyptus Drops	\$0.50

#### **DRINKS:**

Plain Milk - 600ml	\$2.00
Moove Milk: 300ml	\$2.20
500ml	\$3.00
Juice: 300ml / 375ml	\$2.30
Quench	\$2.00
Small Water	\$1.00
Water - 600ml	\$2.00
FOCUS Water	\$2.00
Soft Drink - 600ml	\$3.50
Hot Chocolate	\$2.00
Frozen Blizzards	\$2.00

#### **SAUCE:**

Tomato / BBQ / Sweet & Sour	\$0.40
-----------------------------	--------

**Canteen is open before school from 8:30am and at Recess & Lunch**

**Volunteers are always Needed—Please contact the School on 4932 5999 to find out more!**

RTHS Canteen is operated by the P&C with one paid Supervisor assisted by Volunteers.  
All profits from the canteen are returned to the school to benefit the Students.



## RUTHERFORD TECHNOLOGY HIGH SCHOOL SUPPORTERS



**FITNESS CENTRE OPEN 7 DAYS**

**LES MILLS**  
Group Fitness Classes

**HIGHBOXING**  
Fitness Classes & Boxing Gym

**MARTIAL ARTS**  
Kids & Adults Classes

**FULL GYM**  
Pin Load, Plate Load, Free Weight

**CYCLE**  
Air Conditioned Cycle Room

**New Large Facility**  
59 Mustang Drive Rutherford

**Fully Serviced Fitness Centre**

- Largest group fitness floor in the Maitland area with Les Mills
- Split level Martial Arts studio, classes for adults and children
- Fully equipped boxing area
- Air conditioned cycle studio
- Fully equipped gym - pin loaded, plate loaded & free weight
- Personal training and massage
- Crèche supervised by qualified child carers
- Shower and toilet facilities
- We accept Fitness Passport

Locally Owned and Operated

**PREMIER FITNESS**  
and martial arts centre

Ph 0401 199 913  
www.premierfitness.com.au

## RUTHERFORD MECHANICAL REPAIRS



### ALL MECHANICAL REPAIRS

- Fuel Injection • LPG Servicing
- Pink & Blue Slips
- Manufactures Handbook Services
- MVR License Number 23961

Call **DAVID** on **49325 982**  
**27 JOHN STREET, RUTHERFORD**

*Just Off Hwy Opposite  
Telarah Railway Station.*



A.B.N 19 167 084 237



Quality You Can Trust  
**Ben Hoffmann**  
hoffy\_06@hotmail.com

Shop 17, 1 North Mall Street,  
Rutherford Shopping Centre  
www.hoffsqualitymeats.com.au



The staff and students who are involved in the Breakfast Club would like to acknowledge the generosity of 'Bakers Delight' at Rutherford who now provide us with bread. There are many local businesses who donate their time, service or products to our school. We express our appreciation and hope our school community can reciprocate.

Rutherford Technology High School has an Official Facebook Page – just go to Facebook and look for "Rutherford Technology High School NSW Official Site" and click on "Like".

We will be using the Facebook page to keep everyone informed about events at the school, important dates for your diary, and general information about the school.

Link: <http://www.facebook.com/RutherfordTechnologyHighSchool>

