

**RESPECT
RESPONSIBILITY
COMMITMENT**

8 Nov - MSC Computer Tutoring
9 Nov - Yr 10 Plan-it Youth
9 Nov - Drama Exc to Riverside Theatre
10 Nov - Business Breakfast RTHS
10 Nov - Yr 12 Formal at Crowne Plaza
11 Nov - Money Talks Workshops
11 Nov - Remembrance Day
11 Nov - Motivate Program GENESIS
15-16 Nov - Support Excursion to Taronga Zoo
15 Nov - MSC Computer Tutoring
17 Nov - Primary School grade Sport at Maitland Park
18 Nov - Music Performance Masterclass
18 Nov - TSP Football Speers Point
18 Nov - Motivate Program GENESIS

OFFICE OPENING HOURS

Please be aware the office is open Monday to Friday between 8am and 4pm.

Outside office hours a message may be left on the school answering machine. Parents and caregivers are reminded an appointment is necessary before meeting with teachers as they have class, playground duty and other commitments during the school day.



Our next P&C meeting will be held on the 17th November at 6 pm in the interview room at the Front Office. We welcome any new or existing parents to attend and become involved with the school.

RUTHERFORD TECHNOLOGY HIGH SCHOOL NEWSLETTER



4th November 2016
Email: rutherford-h.school@det.nsw.edu.au
www.rutherfordhs.nsw.edu.au
Telephone: 4932 5999
Fax: 4932 8166

<http://www.facebook.com/RutherfordTechnologyHighSchool>

ASPIRE TEAM of RTHS

Throughout Term 3, the 'Aspire' team visited Telarah, Branxton and Greta Primary Schools to conduct our 'Little Aspirations' workshops with Year 4 students. This has involved a variety of hands-on activities designed to develop employment-related skills at an early age.

The 'Aspire' team (Courtney Walsh, Emily Lambourne, Jared Hughes, Georgia Horne, Courtney Martin, Zoe Fletcher, Priyanka Kumar, Tiffany Burbage, Lachlan Sim, Brandon Currie, Tim Hackett, Connor Stevens, Sean Hawker, Stephanie Chapman, Bella Diaz, Jordan Christiensen, Sophie Currie and Jasmine Beards) have facilitated the workshops and had a great time whilst doing it. However, the jury is out about who is the most immature, Year 4 students or them! Most importantly, there is great learning and fun taking place.



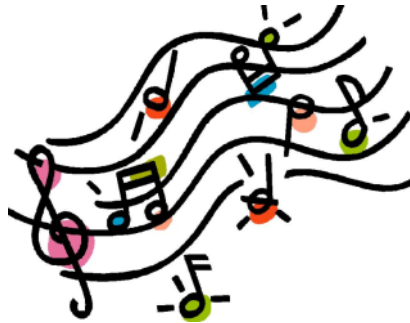
CAPA NEWS

In the CAPA faculty we have been particularly busy over the last term and a half. Here's an overview of our CAPA Calendar for Semester Two

In Term Three we had:

- Visual Arts Intern Miss Britney Bayliss from Newcastle University working with Mr Fean for a ten week block.
- Trial HSC Exams over week 1 & 2 .
- Music Trial practical and elective parent evening August 2nd.
- Drama Trial Individual and group project parent evening 16th & 17th August.
- Education Week Awards Ceremony with our LMG on Wednesday 3rd August – Music performances by three Year 10 students – Charlene Law, Angel Geering and Sarah Warner.
- Drama HSC projects were submitted 22nd August.
- HSC Art Body of Work (BOW) submitted 29th August.
- Music Masters intern Miss Chelsea Davis from Newcastle University working with Ms Hornery for eight weeks over Terms Three & Four.
- Term Three Vivo Assembly was entertained by year 12 Music students Ryan Peters & Ryan Paton.
- HSC Art Exhibition with parents and friends after school in the Art Department 29th August.
- Year 11 & 12 Visual Arts Students involved in a virtual Excursion with Mr Richards with artist Wendy Sharp who is a well-known painter.
- HSC Drama Individual & Group projects presented to BOSTES 1st and 2nd September.
- Visual Arts, Photography and Visual Design Students visit NSW Gallery and Modern Art Gallery in Sydney.
- Music HSC presented to BOSTES on 14th September.
- Year 12 Graduation Assembly – three music performances by the Year 12 music class.
- Year 12 Music student Ryan Peters auditions two of his HSC guitar pieces and is accepted into the prestigious Hunter Valley Exemplary Music performance showcase at The Conservatorium of Music in February 2017.
- School Magazine was completed by Mr Fean and the Year 11 Visual Design Class.
- Year 12 Photography class made a year book for the graduating class. This will be given to them at their formal on November 10th.





In Term Four:

- We began the term with two weeks of MADD (Music, Art, Dance and Drama) auditions for our performing arts students.
- The Dance Ensemble performed at the Prefect Induction.
- TCAPA are busy learning dances, songs and how to play the ukulele with Mr Delforce.
- Year 11 Visual Arts student Courtney Martin was successful in winning a commendation from the Maitland Regional Art Gallery for her portfolio of work.
- Year 12 Drama class attend a performance of Hecuba at The Civic Theatre, Newcastle on October 19th.
- Business Breakfast will have music entertainment by Declan Johnson (Yr 11) & Sarah Warner (Yr 10).
- TCAPA group to visit our LMG over three days in week 7.
- Newcastle Music Academy to conduct a full day of masterclasses in five instruments for RTHS and our LMG music students on November 18th in the Music and Performing Arts Centre.
- TCAPA class entered art works in the Maitland City Council River Lights Multicultural Festival.
- Visual Arts HSC markers from BOSTES mark the Body of Work (major projects) on November 2nd.
- Vivo Award assembly in week 6 with Dance, Music and Drama items.
- MADD showcase –daytime/night time performances and exhibition on Wednesday November 30th in the school hall.
- Drama Ensemble are off to see “Antigone” at Riverside Theatre at Parramatta on November 9th.
- Year 10 Drama class have been writing a soap opera. They are off to Paterson on November 14th for a filming day with Miss McCann and Ms Clarke.
- Term Four Vivo assembly in week 6 with Drama, Music & Dance performances.
- Drama Ensemble is busy preparing a performance for the Targeted Transition Program for the Year 6 students.
- The school band and Year 11 are preparing performances for the Presentation Day on December 12th.

As you can see, we have been busy with lots of activities which complement what is going on in our class rooms. We are grateful for the ongoing support of our wonderful CAPA students and their families. We are always pleased to work with our LMG Primary Schools and in 2017 we hope to continue this relationship.

An initiative for our faculty in 2016 has been to build on community and business relationships. We have been delighted to work with Lifelike Atmospheres, TAFE – Newcastle Campus and Teresa Conicella, a new and fantastic partnership is emerging with Newcastle Academy of Music, Maitland Regional Art Gallery, Maitland City Council, plus our ongoing links to Newcastle University.

Ms Loretta Hornery
HT CAPA

CAREERS AND VET NEWS

This year, we have done away with the traditional Year 10 Careers lessons and placed much more focus on working with students in Years 9-12 individually to assist them in planning their post-school lives. We have also had some great involvement from the Core KLA (Math, English, HSIE and Science) areas in teaching their classes some employment-related lessons to further improve their career literacy.

On the 12th and 15th of August Year 10 students also participated in their 2017 Subject Selection Interviews. They were interviewed by Mrs Anderson, Mrs Elliott, Mrs Young, Mrs Wells, Mr O'Leary and Mr Butler about their future goals, career path and suitable subjects for senior schooling. Students demonstrated great maturity and knowledge throughout this process and have made some educated, well-informed choices.

Vocational Education

Term 3 has also included many opportunities for students to learn outside the classroom. Students who have studied VET courses (Business Services, Construction, Hospitality, Metals and Engineering, Primary Industries Retail Services and Sports Coaching) have had the opportunity to apply their training in the workplace via work placement. Many students have performed so well during this experience they have been offered paid employment by their host employers.

Additionally, our classes have had the opportunity to visit a range of businesses in the industry setting. On the 4th of August, our Year 12 Retail Services class visited GPT Charlestown Square. The class met with the Retail Relations Manager and discussed the history of the centre, current upgrades and issues and its competitive advantage in the Hunter. The class then had the opportunity to complete fieldwork activities whilst exploring the centre.

On the 19th of September, our Year 11 Retail Services students visited Bunnings and Westfield Kotara this term. They had the opportunity to participate in a guided site tour of Bunnings with the Operations Manager and learn about the organisation, current operations, the future of the business and employment opportunities with the company. Whilst at Westfield Kotara, students spoke to the Retail Manager about how they assist retailers, the history of the centre, how to open a store and the future of Westfield Kotara. Of course, there was some 'retail therapy' involved too.

Mr Toby Butler
HT VET



**Order YOUR
School Magazine
TODAY!
\$20 at the Front Office.**



HELPFUL HINTS FROM THE LaST (LEARNING AND SUPPORT TEAM)

GOOD READERS

BEFORE READING

Think about what they already know about a subject.
Know the purpose for which they read
Are motivated or interested to begin reading
Have a general sense of how the BIG ideas will fit together

DURING READING

Pay simultaneous attention to words and meaning
Read fluently
Concentrate well while reading
Willing to "risk" encountering difficult words and able to grapple with text ambiguities
Construct efficient strategies to monitor comprehension
Stop to use a "fix - it" strategy when confused
Reading skills improve

AFTER READING

Understand how the pieces of information fit together
Able to identify what's salient
Interested in reading more





Tuning in to Teens

Emotionally Intelligent Parenting

A six-session parenting program
for parents of adolescents aged 12-19

Would you like to learn how to:

- be better at talking with your teen?
- be better at understanding your teen?
- help your teen learn to manage their emotions?
- help to prevent behaviour problems in your teen?
- teach your teen to deal with conflict?

Tuning in to Teens shows you how to help your teen develop *emotional intelligence*. Adolescents with higher emotional intelligence:

- are more aware, assertive and strong in situations of peer pressure
- have greater success with making friends and are more able to manage conflict with peers
- are more able to cope when upset or angry
- have fewer mental health and substance abuse difficulties
- have more stable and satisfying relationships as adults
- have greater career success –
- Emotional intelligence may be a better predictor of academic and career success than IQ!



Where: Rutherford Technology High School

When: Every Tuesday starting Oct. 25th (Week 3) for six weeks
12.30pm to 2.22pm (Bell Time)

Contact: Kylie Fabri or Mary-Kate Ferguson - 4932 5999

Mary.ferguson13@det.nsw.edu.au

You do not have to have a student at Rutherford High School to attend this course.
All community members welcome.

TRANSPORT NEWS

Opal cards



Students have been using their Opal cards since the beginning of the year. Recent correspondence from the Regional Operations Manager of one of the bus services we use highlighted a number of key issues.

They include:

- Students are required to tap on and off every day when travelling to and from school on any school bus or train they board during the course of their journey
- Students are asked to have their Opal card out and ready before they board to eliminate delays
- The data collected from this process determines the demand and what level of service and bus allocation will be provided to particular areas.

If you require a replacement Opal card please log on to www.transportnsw.info/school-students to request a new card. When you have printed out the application form please hand it in at the Front office . The form will be endorsed and mailed to the Transport Office.

If you have any further questions please phone the school on 49325999, or Transport NSW on 131500.

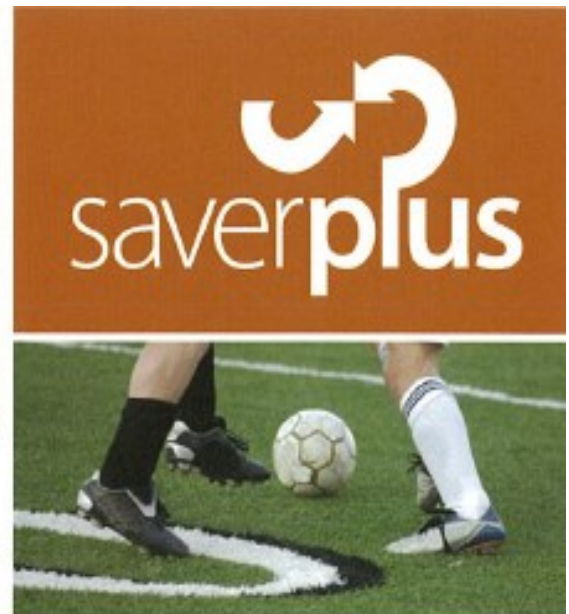
EVERY DAY COUNTS.....

A day here or there doesn't seem like much, but.....

If your child misses.....	That equals.....	Which is.....	And from Kindy to Year 12 that is.....	Which means the best your child can achieve is.....
1 day each fortnight	20 days per year	4 weeks per year	Nearly 1 ½ years of school	Equal to finishing Year 11
1 day a week	40 days per year	8 weeks per year	Over 2 ½ years of school	Equal to finishing Year 10
2 days a week	80 days per year	16 weeks per year	Over 5 years of learning	Equal to finishing Year 7
3 days a week	120 days per year	24 weeks per year	Nearly 8 years of learning	Equal to finishing Year 4

Give your child every chance to succeed....

Every day counts!



Can Saver Plus assist you with high school costs?

Join Saver Plus and match your savings, dollar for dollar, up to \$500 for educational costs including:

- school uniforms and text books
- computers, laptops and tablets
- excursions and camps
- sports equipment, uniforms and lessons
- music tuition and instrument hire.

You may be eligible if you have a Health Care or Pensioner Concession Card, are at least 18 years old, have some regular income from work (you or your partner) and have a child at school or study yourself.

Contact Cynthia Culhane your local Saver Plus Worker:
(02) 4032 4703 / 0418 699 646
or cynthia.culhane@thesmithfamily.com.au

*Saver Plus was developed by ANZ and the Brotherhood of St Laurence and is delivered throughout Newcastle by The Smith Family.
The program is funded by ANZ and the Australian Government.*



Rutherford Technology High School UNIFORM SHOP

PRICE LIST



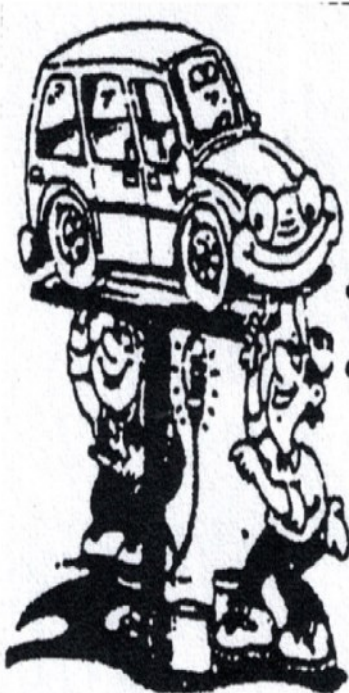
ITEM	PRICE	SIZE	QTY	TOTAL INCL GST
Girls				
Jnr Blouse Sky	28.00			
Snr Blouse Lemon	28.00			
Jnr/Snr Girls Shorts	35.00			
Jnr Skirt	48.50			
Snr Skirt	48.50			
Bootleg slacks	39.00			
Boys				
Jnr/Snr Boys Shorts	35.00			
Jnr/Snr Trousers	39.00			
Unisex				
Fleecy Jacket	40.00			
Jnr Polo	29.00			
Snr Polo	29.00			
Elastic Waist Everyday Black Shorts	35.00			
Elastic Waist Everyday Black Long Pants	39.00			
Jumpers				
Jumper	72.00			
Sports				
Jacket	65.00			
Sports Shorts Std	25.00			
Trackpant	38.00			
Sports Polo	35.00			
Others				
Scarf	20.00			
Socks 5pr	20.00			

OPENING HOURS:

TUESDAY
THURSDAY

8:00am - 12noon
8:00am - 12noon

RUTHERFORD MECHANICAL REPAIRS



ALL MECHANICAL REPAIRS

- Fuel Injection · LPG Servicing
- Pink & Blue Slips
- Manufactures Handbook Services
- MVR License Number 23961

Call **DAVID** on **49325 982**
27 JOHN STREET, RUTHERFORD
Just Off Hwy Opposite
Telarah Railway Station.

A.B.N 19 167 084 237



Quality You Can Trust

Ben Hoffmann

hoffy_06@hotmail.com

Shop 17, 1 North Mall Street,
 Rutherford Shopping Centre
www.hoffsqualitymeats.com.au

Rutherford Technology High School has an Official Facebook Page – just go to Facebook and look for “Rutherford Technology High School NSW Official Site” and click on “Like”.

We will be using the Facebook page to keep everyone informed about events at the school, important dates for your diary, and general information about the school.

Link: <http://www.facebook.com/RutherfordTechnologyHighSchool>



CANTEEN ROSTER 2016



November	7	Volunteer needed
November	8	J Lintott
November	9	Volunteer needed
November	10	J Lintott
November	11	Volunteer needed
November	14	Volunteer needed
November	15	Volunteer needed
November	16	J Lintott
November	17	K Hobbs
November	18	Volunteer needed

Bakers Delight
 We're for real.

The staff and students who are involved in the Breakfast Club would like to acknowledge the generosity of 'Bakers Delight' at Rutherford who now provide us with bread. There are many local businesses who donate their time, service or products to our school. We express our appreciation and hope our school community can reciprocate.



THANK YOU TO McDONALDS RUTHERFORD.

McDonalds Rutherford continues to support our school in many ways.



RUTHERFORD TECHNOLOGY HIGH SCHOOL

CANTEEN MENU

Effective from Term 2 2016



ITEM	PRICE		DRINKS	PRICE
Salad Roll	\$4.30		Moove Milk 500ml	\$3.00
Chicken Salad Roll	\$4.80		Moove Milk 300ml	\$2.20
Ham Salad Roll	\$4.80		Juice 300ml/375ml	\$2.30
Corn Meat Salad Roll	\$4.80		Water 600ml	\$2.00
Chicken Salad Sandwich	\$4.30		Small Water	\$1.00
Salad Sandwich	\$3.70		Soft Drink 600ml	\$3.50
Egg & Lettuce Sandwich	\$3.70		Quench	\$2.00
Curried Egg Sandwich	\$2.90		Plain Milk 600ml	\$2.00
Vegemite Sandwich	\$2.90		Focus Water	\$2.00
Cheese Sandwich	\$2.90		Hot Chocolate (term 2 & 3)	\$1.50
Ham, Cheese & Tomato	\$3.00			
Cheese & Tomato	\$2.70			
Corn Meat & Pickles	\$3.00		SNACKS	
Meat Sandwich	\$2.90		Fresh Fruit Salad (Term 1 & 4)	\$2.50
Chicken Salad Wrap	\$4.80		Fresh Water Melon (Term 1 & 4)	\$2.50
Thai Chicken Salad Wrap	\$4.80		Deli Rock Chips	\$1.00
Salad Wrap	\$4.30		JJ's Chips	\$1.00
Meat Salad Wrap	\$4.80		Eucalyptus Drops	.50c
Salad Box	\$4.90		Muffins	\$1.60
Salad Box (small)	\$3.60			
Chicken Salad Box	\$5.90		Finger Buns	\$1.60
Chicken Caesar Salad Box	\$6.00			
Caesar Salad Wrap	\$5.00			
Chicken Tender Salad Wrap	\$5.00			
EXTRAS				
Bread Roll (extra)	.90		Banana Bread	\$2.60
Butter Bread	.90			
Toasted Sandwich (order)	.50			
Extra Fillings	.40			
Butter/Mayo or Mustard	.20		ICE CREAMS	
HOT FOOD			Billabong	\$1.60
Cheese and Bacon Roll	\$2.20		Paddle Pops	\$1.60
Hot Dog	\$2.50		Frosty Fruits	\$2.00
Pizza Rounds	\$2.30		Frozen Yoghurt	\$1.80
Chicken Burger	\$3.60		Vanilla Buckets	\$1.20
Chicken Burger w Salad	\$4.30		Paddle Pop Lemonade Twist	\$1.20
Plain Pies	\$2.70		Juice Ice Block	\$1.00
Sausage Rolls	\$2.60		Milo Cups	\$2.90
Cheese & Bacon Pie	\$3.00		Moosies	\$1.00
Potato Pie	\$3.00		SAUCES	
Mamee Cup Noodles	\$2.20		Tomato	.40c
Chicken Gravy Roll	\$3.60		BBQ	.40c
Cheese Burger	\$3.60		Sweet & Sour	.40c
Chicken Chippies (6)	\$3.00			
Chicken Nuggets (6)	\$3.00			
Garlic Bread	\$1.10		NEW	
Meat Ball Subs **NEW**	\$3.60		Watch our noticeboard	
Pizza Rounds	\$2.50		for daily \$3 hot dishes	