

**RESPECT
RESPONSIBILITY
COMMITMENT**

RUTHERFORD TECHNOLOGY HIGH SCHOOL NEWSLETTER



5th June, 2015

Email: rutherford-h.school@det.nsw.edu.au

www.rutherfordhs.nsw.edu.au

Telephone: 4932 5999

Fax: 4932 8166

<http://www.facebook.com/RutherfordTechnologyHighSchool>

CALENDAR DATES

8th June-Queen's
Birthday Public Holiday
10th June-Yr. 11/12
Drama Excursion-Sydney
12th June-First Aid
Course
16th June-P & C Meeting
6pm Admin Office
16th June- Yr. 9 /10
Science Excursion
16th June-Futsal State
Titles U/14s
17th June- Futsal State
Titles U/16s
18th June- Futsal State
Titles U/19s
19th June- Ryda Driver
Education Day- Tocal
19th June- HSC Retail
Services Excursion -
Charlestown Square

OFFICE OPENING HOURS

Please be aware the
office is open Monday to
Friday between 8am and
4pm. Outside office hours
a message may be left on
the school answering
machine.

Parents and caregivers
are reminded an
appointment is necessary
before meeting with
teachers as they have
class, playground duty
and other commitments
during the school day.

Japan Trip 2015

Since this was my first trip overseas it was very exciting and probably the best trip I have ever been on. Everything about this trip was amazing, from the food to the places we visited. I loved it all. I loved Tokyo Disneyland where we got some cool pictures with the Disney characters. The weather wasn't really on our side leaving it pretty cold and a bit wet! We eventually got a few sunny days which was really nice.

The food there was amazing. We had ramen in Tokyo and a traditional Japanese dinner in Miyajima, which tasted great. Miyajima was my favourite place of all it is an island off Hiroshima. There are wild deer there which roam around the island and are sacred to the area. You can pat them, however you have to be careful since they like to take your stuff! They even tried to steal my ice-cream. If I could stay there forever I would.

Kyoto was the next stop which was amazing. We stayed in a really fancy hotel and saw lots and lots of temples which were beautiful. We visited Himeji castle and Kinkakuji (which is a golden temple) Overall it was a fantastic trip.

Emma Woodbridge Year 10
(More photos on Page 8)



Himeji Castle Kyoto

SENIOR EXECUTIVE REPORT

While this term is almost over the fact that it has gone so fast indicates that our school is really busy and full on in terms of student opportunities on offer to enable rich learning experiences at Rutherford Technology High School.

2015-2017 STRATEGIC PLAN

Our plan has been uploaded to our website. This sets our path for the next three years in the areas of:

- Quality Learning
- Quality Relationships
- Quality Community connections

BUILDING UPDATE

The commercial kitchen and Home Economics area are progressing towards completion with handover expected in late July.

The first 3 Science labs will be completed by the start of August

Maitland Tutorial Centre should be completed in August.

The new 2 storey classroom block has started, as has the main quad, lift and walkways.

SPORTING SUCCESS

Congratulations to our representative sporting teams. Swimming, lawn bowls, football, rugby league, cross country and athletics have seen students selected in regional and state teams or participate at carnivals. Well done, students and thank you staff, who have coached or managed a team or covered lessons so that teams can be supervised. Go Rutherford, and good luck to our lawn bowlers at the state titles in Temora next week.

DRAMA SUCCESS

Our Drama ensemble has again had great success reaching the final of the "Short and Sharp" (was "Fast and Fresh") festival in Sydney. Good luck on Friday 12 June.

UNIFORM REFLECTS OUR SCHOOL

We are pleased that our school uniform is supported by a good percentage of our students and parents. There are many comments from the public about how great our students look when they are in full school uniform. Wearing uniform indicates pride students have for themselves and their school. We appreciate parent support of compliance with our uniform policy. As the cold weather builds we encourage parents to purchase the correct school jumper and remind you that jeans and black tights are not part of the uniform.

SUPERVISION OF TEENAGERS

We often hear of situations that young teenagers get into outside of school. We are surprised that parents have either endorsed their children's participation in these behaviours or alternatively are completely unaware of what their children get up to. We encourage all parents to make sure there is strong communication between parents if there are parties or sleep overs planned. Quite often what is explained to parents by children is quite different from what goes on. In many situations risk taking behaviours are the norm. We need to ensure that there is adequate knowledge and supervision of children outside of school.

SUBJECT SELECTION EVENING

For the information of parents and students who are entering Year 9 and Year 11 in 2016. On Wednesday 10th June RTHS is offering the opportunity to attend and receive appropriate advice on subjects offered at our school for next year. The evening is designed to assist in ensuring the subjects selected are relevant for each student.

Year 10-11 starts at 5.30pm in the school hall, with Year 8-9 set to start at 6pm in the hall.

All faculties will have representatives who will be available to answer any questions and offer advice as to which courses may be available. We encourage parents and students to take advantage of the evening.

N AWARDS

Students in Years 10, 11 and 12 are required to complete and submit all assessment tasks on time. Non completion of these tasks can result in a student being N awarded in an individual subject or a number of subjects and therefore deemed ineligible to receive a RoSA, Preliminary HSC or HSC. Students who have received N award warning letters need to see their class teacher or head teacher of the faculty, to determine what they need to complete to resolve the N award. Students with more three N award warnings may be placed on an improvement program with the Deputy Principal.

SCHOOL CANTEEN SURVEY

The final page of this fortnights newsletter is a canteen survey. Please take the time to fill it out and return to the Front Office. This is an excellent opportunity to have a say in what the canteen provides for our students.

Mike Whiting

Principal

TAS EXECUTIVE REPORT

It has been a very interesting time in TAS recently. We are all very excited about the work going on in regards to our new facilities. Although the work zones are creating minor challenges, the staff and students have been very positive and are all working together to make the most of our learning experiences.

There is currently a large undercover area being constructed between the Industrial Arts and Art Blocks. This will provide excellent opportunities for the students in Construction and other subjects to engage in some outside learning activities.

Although the Industrial Arts rooms are not being upgraded as such, the students, under the supervision of Mr Brown are taking it on themselves to improve their learning environment. The senior Construction classes have prefabricated and installed much needed storage facilities in the TAS corridor, upgraded wet areas with new sinks and splashbacks and painted the classroom in contemporary tones. While the junior classes including Industrial Technology and Technology Mandatory, have helped refurbish the work benches, whiteboards, display boards and have air-brushed signage for the Electronics room.

Currently Joel Smith and Bradley Barnett from the Year 11 construction class and Year 8 Technology Mandatory are working on murals to complement the existing 1980's artwork bringing the classrooms into the twenty first century. The students have been given a chance to demonstrate their flair and innovation in the setting out and decorating of the workspace in a street art theme. This has resulted in our students working in an area that they feel is relevant and are connected to.

There is also a commercial kitchen being currently constructed in the Home Economics building. This facility will provide a fantastic opportunity for our students to engage in the commercial cookery stream of the Hospitality Course, as well as giving them a real life understanding of the Catering Industry. It is very exciting to think about all of the opportunities both staff and students will experience once the upgrade work is complete.

In closing I would like to thank the parents and carers for their continued support in relation to the wearing of correct footwear and the payment of elective fees. With your support we are able to provide the real life learning experiences in a safe and effective environment.

Mr Scott Cromarty

HT Tas Dept



Compulsory School Attendance

Information for parents

Education for your child is important and regular attendance at school is essential for your child to achieve their educational best and increase their career and life options. NSW public schools work in partnership with parents to encourage and support regular attendance of children and young people. When your child attends school every day, learning becomes easier and your child will build and maintain friendships with other children.

What are my legal responsibilities?

Education in New South Wales is compulsory for all children between the ages of six years and below the minimum school leaving age. The *Education Act 1990* requires that parents ensure their children of compulsory school age are enrolled at, and regularly attend school, or, are registered with the Board of Studies, Teaching and Educational Standards for homeschooling.

Once enrolled, children are required to attend school each day it is open for students.

The importance of arriving on time

Arriving at school and class on time:

- Ensures that students do not miss out on important learning activities scheduled early in the day
- Helps students learn the importance of punctuality and routine
- Give students time to greet their friends before class
- Reduces classroom disruption

Lateness is recorded as a partial absence and must be explained by parents.

What if my child has to be away from school?

On occasion, your child may need to be absent from school. Justified reasons for student absences may include:

- being sick, or having an infectious disease
- having an unavoidable medical appointment
- being required to attend a recognised religious holiday
- exceptional or urgent family circumstance (e.g. attending a funeral)

Following an absence from school you must ensure that within 7 days you provide your child's school with a verbal or written explanation for the absence. However, if the school has not received an explanation from you within 2 days, the school may contact you to discuss the absence.

Principals may decline to accept an explanation that you have provided if they do not believe the absence is in the best interest of your child. In these circumstances your child's absence would be recorded as unjustified. When this happens the principal will discuss their decision with you and the reasons why.

Principals may request medical certificates or other documentation when frequent or long term absences are explained as being due to illness. Principals may also seek parental permission to speak with medical specialists to obtain information to collaboratively develop a health care plan to support your child. If the request is denied, the principal can record the absences as unjustified.

Travel

Families are encouraged to travel during school holidays. If travel during school term is necessary, discuss this with your child's school principal. An *Application for Extended Leave* may need to be completed. Absences relating to travel will be marked as leave on the roll and therefore contribute to your child's total absences for the year.

In some circumstances students may be eligible to enrol in distance education for travel periods over 50 school days. This should be discussed with your child's school principal.





My child won't go to school. What should I do?

You should contact the principal as soon as possible to discuss the issue and ask for help. Strategies to help improve attendance may include a referral to the school's learning and support team or linking your child with appropriate support networks. The principal may seek further support from the Home School Liaison Program to develop an Attendance Improvement Plan.

What might happen if my child continues to have unacceptable absences?

It is important to understand that the Department of Education and Communities may be required to take further action where children of compulsory school age have recurring numbers of unexplained or unjustified absences from school.

Some of the following actions may be undertaken:

- Compulsory Schooling Conferences

You may be asked, along with your child, to attend a Compulsory Schooling Conference. The conference will help to identify the supports your child may need to have in place so they attend school regularly. The school, parents and agencies will work together to develop an agreed plan (known as Undertakings) to support your child's attendance at school.

- Application to the Children's Court – Compulsory Schooling Order

If your child's attendance at school remains unsatisfactory the Department

may apply to the Children's Court for a *Compulsory Schooling Order*. The Children's Court magistrate may order a Compulsory Schooling Conference to be convened.

- Prosecution in the Local Court

School and Department staff remain committed to working in partnership with you to address the issues which are preventing your child's full participation at school. In circumstances where a breach of compulsory schooling orders occurs further action may be taken against a parent in the Local Court. The result of court action can be the imposition of a community service order or a fine.

What age can my child leave school?

All New South Wales students must complete Year 10 or its equivalent. After Year 10, and up until they reach 17 years of age, there are a range of flexible options for students to [complete their schooling](#).

Working in Partnership

The Department of Education and Communities recognises that working collaboratively with students and their families is the best way to support the regular attendance of students at school.

We look forward to working in partnership with you to support your child to fulfil their life opportunities.

If a student misses as little as 8 days in a school term, by the end of primary school they'll have missed over a year of school.

Further information regarding school attendance can be obtained from the following websites:

Policy, information and brochures:

<http://www.schools.nsw.edu.au/studentsupport/programs/attendance.php>

The school leaving age:

<http://www.schools.nsw.edu.au/leaving-school/index.php>

Do you need an interpreter?

Interpreting services are available on request, including for the hearing impaired. The Telephone Interpreter Service is available 24 hours a day, seven days a week on 131 450. You will not be charged for this service.

For further advice and questions contact your educational services team

T 131 536

Learning and Engagement

Student Engagement & Interagency Partnerships

T 9244 5129

www.dec.nsw.gov.au

© February 2015

NSW Department of Education and Communities

WELFARE REPORT

PLAN-IT YOUTH

Last Wednesday saw 10 students from Year 10 successfully complete the Plan-it Youth program. The program culminated in a visit to the Hunter Valley Hotel Academy located at Kurri TAFE, where the students were given a guided tour of the facilities and an informative talk about the courses on offer at this TAFE Campus. Students were accompanied on this excursion by their mentors who have generously given up their time to meet with these students for the last 12 weeks. During mentoring sessions students have explored career options and set achievable goals for themselves in regard to school and their future. At the completion of the TAFE tour students participated in a special morning tea and demonstrated their new - found public speaking skills, by giving a short speech outlining what they have enjoyed about the Plan-it Youth program, and the ways in which they have benefited from this program. Congratulations to the following Year 10 students and a special thank you to our wonderful mentors who generously give up their time to work with our students:

Sam Beckett
Brooklyn Clarke
Emmerson Field
Anthony Germon
Sean Hawker
Shaun Keane
Emily Kingdom
Lachlan Thomas
Gabby Whipper
Victoria Wilson

MOTIVATIONAL SPEAKER

On Friday 12th of June all students at Rutherford Technology High School will attend a session presented by Lorin Nicholson. Lorin is a noted presenter who has travelled to schools all over Australia and overseas, to share his life experiences with students. During these sessions the following themes will be covered:

Year 7/8 - Social justice, anti-bullying, making positive choices

Year 9/10 – Choice, attitude, effort, hard work

Year 11/12 – Leadership

For further details about Lorin Nicholson please read the flyer on the next page.

ATTENDANCE

Rutherford Technology High School is committed to encouraging and promoting excellent student attendance, as we understand the long term impact that poor attendance rates can have on our students and their ability to succeed in life after school. In Week 2 Term 3 a BBQ will be held for all students with above 98% attendance for Term 1 and Term 2 2015. This is to celebrate the commitment that these students have demonstrated towards their education. Eligible students will be notified at the beginning of Term 3. Each year in Term 4 students with excellent attendance throughout the year are given the opportunity to attend a reward excursion. The venue for this year's excursion has recently been booked with a day visit to Port Stephens which includes a Dolphin Watch cruise and BBQ lunch. Please continue to reinforce with your child the importance of school attendance and if you have any concerns in this area contact the school to speak with the Head Teacher Welfare (Kris Turner).

Head Teacher Welfare (Relieving)

Kris Turner

P & C MEETING

The next meeting of the Rutherford High P & C will be at 6pm on Tuesday 16th June. The meeting is held in the new administration block interview room. Access is just inside our main entry to the Office. The P & C is a very important reference group for the school and information about what is happening at Rutherford High is presented at each meeting. There is also opportunity for questions and clarification of aspects of school life. All are welcome and encouraged to contribute to the life of the school in this important role. With so much happening to our school in the coming months and years, it would be great to see some new families join us.

DATES FOR VACCINATION AT RUTHERFORD TECHNOLOGY HIGH SCHOOL

Vaccinations will be held in the library on the following date.

Round 3 – Wednesday 9th September 2015. The vaccinations are for:-

Year 7 Boys & Girls - HPV Dose 2

(Chickenpox and DPT was given in Round 1 – if student require these then can be caught up).

Year 11 & 12 - MMR (Measles, mumps & rubella.) Only for students who have NOT received 2 doses previously. Please ensure that the student's Medicare number is listed so that the nurses can check the number of doses already received. Any students who have not returned their forms can come and see Mrs Young in Science. If there are any questions, please contact me at school on 49325999.

Anne Young
Supervisor of Girls



LORIN.COM.AU

INSPIRED BY LORIN

CLIMB YOUR OWN MOUNTAIN

STUDENT PERFORMANCES & MASTER CLASSES

STUDENTS, STAFF, PARENTS AND COMMUNITY MEMBERS ARE INVITED TO ATTEND :

Australia's preeminent youth motivational speaker, **Lorin Nicholson**, has received outstanding feedback in over 1400 schools, and performed for more than a million students throughout Australia and the globe.

We are looking forward to Lorin sharing his simple but powerful messages of **perseverance, resilience, respect, inclusion and leadership** that will greatly inspire every student to succeed in all areas of school and personal life.

Rutherford Technology High School

Friday 12th June 2015

9:10, 10:05 & 11:25 am

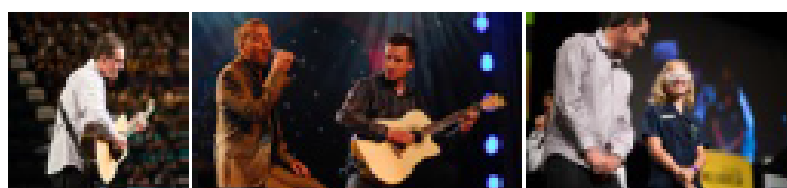
Many have been quoted as saying that this is, without doubt, the most motivational and potentially life changing presentation they have ever witnessed.

"You could hear a pin drop in our hall. Your show gave them more to contemplate in one hour than I could ever give them in my classroom."

Lorin's incredible guitar playing, coupled with his amazing life achievements growing up blind, will not only captivate and entertain, but will inspire each individual to take on a more positive attitude towards those around them.

We hope they will find strength within, to never give up on achieving our dreams.

www.lorinnicholson.com



INSPIRED BY
LORIN



FIRST AID COURSE

The school has organised a First Aid training course for students in Years 11 & 12. This will take place on the 12th June and the cost is \$70.00. Students who are studying Sports Coaching are expected to do the First Aid course as it is a **mandatory** component of your course. The course is also recommended to students who study Hospitality.

We are again offering Year 12 students the opportunity to obtain their RSA (Responsible Service of Alcohol) and RCG (Responsible Conduct of Gambling) certificates. These courses will be run over two days in Term 3, RSA on the 6th August for \$120.00 and RCG on the 7th August for \$80.00. If you do both courses the total cost is \$190.00.

At the beginning of the year, the Government decreed in that everyone who wanted to undertake some sort of training would need to register for a **Unique Student Identification** number (USI). This can be obtained by going on line www.gov.au or type USI in your search engine and just follow the instructions. You will need to add some form of identification to complete the process. Remember this number is similar to your TFN.

You will have your USI number forever, so put it in a safe place.

Debby Elliott
Careers Advisor

MEETING EX-STUDENT JOSH GIBSON.

It was a happy occasion when Daniel Gibson met his brother, Josh Gibson at UTS on 21st May. The two brothers shared lunch and a chat. Josh is in his second last year of combined Law and Arts Degrees. During his years at UTS he had applied for a six-month scholarship to attend a university in Paris, contributing to his interest in International Law. He intends next year to apply for another scholarship, this time to Singapore to broaden his international experience. He attends about 12 hours of lectures a week and for each hour of lecture he spends about 3 hours of reading and researching. Congratulations to such a committed and motivated young man.



Josh and Daniel Gibson

Rutherford Tennis Complex

JUNE/JULY SCHOOL HOLIDAY TENNIS CLINIC

Rutherford Tennis Complex, Fairfax St Rutherford

Pro-Shop: 49345016 Mobile: 0421882055 Post: PO Box 2411 Greenhills 2323

Web site: www.maitlandtenniscentre.com.au

When: 6th, 7th, 8th July

(Monday, Tuesday, Wednesday)

Time: 9.00am to 10.30am per day

Price: \$50.00 for 3 days per child (Family Discounts Available)

Age: 4 years to 16 years

Standard: Beginner to intermediate

Name (1)..... D.O.B.....

Name (2)..... D.O.B.....

Name (3)..... D.O.B.....

Address.....

Phone (Home)..... (Mobile).....

Email.....

BOOK NOW: PH 49345016, 0421882055 or

On line @ www.maitlandtenniscentre.com.au

DON'T MISS OUT

CAREERS AND VOCATIONAL EDUCATION UPDATE

The latter half of Term 1 and the beginning of Term 2 have been an action-packed and exciting time for our faculty and students.

TRAINING OPPORTUNITIES

Late in Term 1, and again in Week 3 this term, we have offered students the opportunity to complete the WHS White Card course. This gives students accreditation to be on worksites and is essential in a number of industries. It also allows our students to complete work placement in Construction and Metals and Engineering and also improves their chances of future employment.

In addition to this, we have First Aid and Responsible Service of Alcohol / Responsible Conduct of Gambling courses available to students on the 12 of June and the 6-7th of August respectively. Students are reminded that successful completion of the First Aid course is essential to gain their full qualification in Sports Coaching and Hospitality VET courses.

HUNTER VALLEY CAREERS EXPO

On the 22nd of May, 85 Year 10-12 students attended the Hunter Valley Careers Expo at Maitland Federation Centre. The students enjoyed discussing the future study and career options with industry professionals from employers, universities, training organizations and the defence forces. Students had a lot of fun and learnt a lot from the experience. As always, the group conducted itself in an exceptional manner.

SCHOOL BASED APPRENTICESHIPS AND TRAINEESHIPS

RTHS is still maintaining a strong relationship with local employer through School Based Apprenticeships and Traineeships (SBATs). Students are combining work and training as part of their HSC study in a very relevant and effective manner. Many thanks must go to the employers who support our students in this process such as McDonalds, Hungry Jacks, KFC, J & S Engineering, Segenhoe Stud, Benhome Aged Care and Calvary Aged Care. Without these employers these opportunities simply would not happen and SBATs are making a massive impact on the employability of students and guiding them into a successful future career pathway.

If potential employers, parents or students want to know more about SBATs and how they work, please see Mr Toby Butler in the Careers Office.

'LITTLE ASPIRATIONS' PRIMARY CAREERS PROGRAM

For the remaining part of 2015 our Aspire Ambassadors will be delivering a careers-based workshop to Year 4 students in our six feeder primary schools. It aims to create early career awareness amongst the young students involved and better prepare them for future employment. Our first excursion will be at Lochinvar Primary School on the 10th of June. The Aspire Ambassadors who are facilitating this program are:

Lachlan Sim.
Brandon Currie
Emily Lambourne
Kiarra Tilden
Georgia Horne
Courtney Martin
Zoe Fletcher
Priyanka Kumar
Tiffany Burbage
Jack Willaims
Courtney Walsh
Jhon Barrios
Brooke Sweetman
Brittany Jones
Daniel Gibson
Declan Payne
Jordan Hamson
Jared Hughes



Mr Toby Butler
Careers Dept

HUNTER VALLEY CAREER EXPO AT MAITLAND FEDERATION CENTRE



PARENT SKILL REGISTER

During this term, a letter was posted to all families requesting support to complete a 'Parent Skill Register'. Forms will also be sent as an email attachment to all families that have provided an email address. Some students have returned this letter to the Front Office. As encouragement for the prompt return, three names of those students will be drawn from 'a box' and they will be rewarded with canteen vouchers. The closing date for the ballot will be Friday, 12th June. The three names will be announced on Monday, 15th June assembly. So to be eligible, return the form as soon as possible.

RYDA ROAD SAFETY EDUCATION – YEAR 11 FIELD TRIP

On Friday 19th June 2015 all students in Year 11 will participate in the **Ryda Road Safety Education** field day at Tocal College. With a kind sponsorship from Rutherford-Telarah Rotary, the cost per student is only \$15 (actual cost is in excess of \$60). This highly engaging and interactive program is an excellent opportunity for your child to gain invaluable education and insight into the dangers on our roads and how to prepare for a lifetime of safe driving.

Further and more detailed information will be handed out to all Year 11 students in a permission note. Please note that this program qualifies towards the **compulsory** 25 hour "Crossroads" course that all students must complete in Year 11.

#1 in road safety education

RYDA

Road Safety Education Limited is the preeminent provider of road safety education for youth in Australasia. The flagship RYDA Program is delivered to approximately 50,000 17-18 year old high school students, at 80 venues across Australia and New Zealand, every year.

Getting behind the wheel of a car as a young driver is said to be the most dangerous thing that a person will do in their entire life.

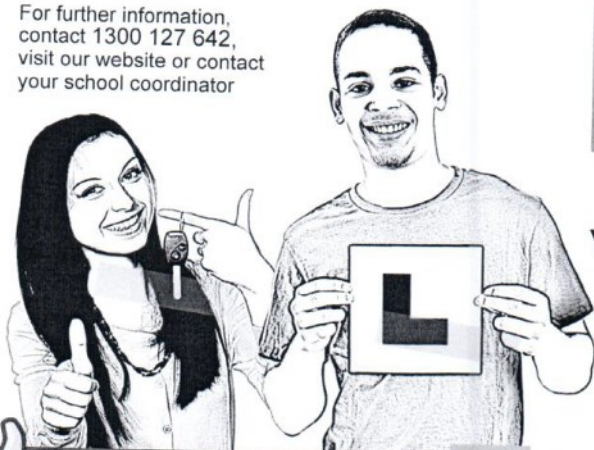
By participating in RYDA your school has furthered their commitment to educating the 'whole student', providing an opportunity to learn essential life skills. Students are encouraged to take greater responsibility for themselves and their friends before they face the challenges of driving solo or as passenger of a new driver.

RYDA is a one day Program, conducted at an out of school venue, chosen to highlight the road safety messages.

Now is the time to equip young people with the tools and knowledge they need to stay safe on the road.

RYDA's learning is for life!

For further information, contact 1300 127 642, visit our website or contact your school coordinator



sessions

During the RYDA Program, students take part in six interactive sessions.

- **STOPPING DISTANCES** Demonstrates the distance it takes to stop a vehicle travelling at different speeds, highlighting the huge impact an extra 10km/h can have. Students have the opportunity to participate, as passengers, in a vehicle driven by a licensed driving instructor.
- **HAZARDS, DISTRACTIONS & RISKS** A high energy session familiarising students with common crash types and how to avoid or minimise their impact.
- **PLAN B: ALCOHOL, DRUGS AND FATIGUE** An interactive workshop focusing on the impact that alcohol, drugs and fatigue have on driving ability.
- **ROAD CHOICES** A discussion, routinely led by a Police Officer on consequences of poor choices on the road, from the tragic human toll to financial and legal ramifications.
- **CRASH SURVIVOR** A powerful presentation by a person who has a brain or spinal injury as a result of a vehicle crash.
- **MY WHEELS** Students learn about vehicle safety, covering such topics as ABS brakes, car maintenance and insurance.

YOUNG PEOPLE AGED 17-25 REPRESENT
15% OF THE POPULATION BUT COUNT FOR
AROUND A **QUARTER** OF
DEATHS AND INJURIES
ON OUR **ROADS**

The RYDA Program is supported through a comprehensive website, loaded with resources for teachers, students and parents (rse.org.au/ryda) as well as our growing Facebook community (facebook.com/roadchoices). Sign up to Facebook and become part of the conversation.

Founding Sponsor

BOC
A Member of The Linde Group

TOYOTA
Community Foundation

TYRE & AUTO SERVICE

SUNCORP
Insurance



Community Partner
Rotary Clubs in Australia
(ACT, NSW, Qld, SA, Tas,
Vic & WA) & New Zealand

OUR STUDENTS INVOLVEMENT IN THE SALVATION ARMY RED SHIELD APPEAL.

Congratulations to all our students who volunteered their time over the weekend to support the Salvation Army in their Red Shield Appeal. Their actions are highly commendable as they assist the Salvation Army in their funding to provide so many services to people who are less fortunate than themselves.

Jocelyn Ware was interviewed by Sam Norris from the Maitland Mercury with the students from other public high schools and Mr Gil Gordon and Major Ian Channelle from the Salvation Army.

Zoe Fletcher and Priyanka Kumar collecting for the Red Shield Appeal at Rutherford on Sat, 30th May.



YEAR 12 CHEMISTRY TRIP TO ORICA.

On Tuesday the 26th of May, students in the Year 12 Chemistry class travelled to Orica at Kooragang Island. At this facility over a thousand tonnes of ammonia, nitric acid and ammonium nitrate are produced each day for use in mining, agriculture and other industries.

The students listened to an experienced chemical engineer explain the processes involved in making these substances and how the plant operates. Prior to our visit the ammonia plant had shut down and was in the process of restarting.

With the appropriate hard hats and safety boots on, the students toured the actual plant including the ammonia plant and the chemical laboratories. Questions were asked, answers were given and the students gained a deeper understanding of this often examined part of the syllabus.

A big thank you goes to Mrs Porter for her organisation and Mr Edwards/ Mrs Porter for covering lessons to facilitate the excursion.

Kevin McMullen

Year 12 Chemistry Teacher

YEAR 9'S VISIT TO THE MARITIME MUSEUM AT DARLING HARBOUR AND UTS.

Ten excited Year 9 students left early on Thursday morning, 28th May to drive to the Maritime Museum at Darling Harbour for a workshop on Maritime Archaeology. After learning about the different roles of conservers, preservers and curators and examining a range of shipwreck artefacts the students were taken on a tour of the Museum looking at relics retrieved from the seabed, including the anchor from the First Fleet ship, 'The Sirius'.

After a quick lunch, students walked to the University of Technology Sydney, Ultimo where they met Mr Stan Yiu, Biological Science graduate who supervises the practical activities of university students in the Science laboratories. Stan took the students on a tour of a university laboratory which is so different from the labs here at school. UTS has donated to RTHS Science department, ten superb microscopes with a magnification of 1000x and worth about \$1500 each. These microscopes were given to our students who then carried them back to the bus for delivery to school. The school and students are greatly appreciative of the donation and to Mr McMullen for organising it.



2015/2016 ENTERTAINMENT BOOK FUNDRAISER

The annual fundraiser is on again and they make perfect gifts.

The books and digital memberships are still \$60.00 with \$12.00 of each purchase going directly to the school.

To order a 2015/2016 Entertainment Book OR Digital membership (which can be installed on up to 4 phones-Great for families) :

- Please send your order form in an envelope with cash or credit card details to the office at school.
- Direct Deposit into our school account.

Call Lexi Fitzgibbon on 49325999 for more information.

YEAR 10'S VISIT TO THE UNIVERSITY OF NEW SOUTH WALES AND THE MUSEUM OF HUMAN DISEASE.

On 21st May, seven Year 10 students had the opportunity to spend the day at the UNSW campus at Randwick. In the morning they visited the Museum of Human Disease where they attended a lecture on the effect of binge drinking of alcohol, and smoking on the organs of the body. Graphic photographs and affected livers and aortas preserved in jars demonstrated the impact of alcohol and cigarettes on the body. The next session was a tour of the Museum where hundreds of bottles containing disease affected body parts are exhibited. Although this area could be considered gruesome, the students were fascinated by the enormous range of diseases, their causes, their effects and possible ways of preventing them. Lunch took place in the University food court area, where the students met ex-student and Captain Josh Gibson. He took the students on a tour of a 500 seat lecture auditorium where a Creative Writing lecture was being presented. After lunch, the students visited several faculty areas of the University and interviewed a range of students from the Sciences, Engineering, Law and Arts areas.



HELPFUL HINTS from the LITERACY & SUPPORT TEAM

Some tips to improve Comprehension.

- **Keep Notes** - No distractions. Find a peaceful area
- **Jot down what you remember** - Write enough to jog your memory
- **Note New Information** - e.g. characters, events, make family tree, facts, ideas, relationship between ideas, characters, information.
- **Re-read** – Do the notes make sense? Wait a day then read over.
- **What was the main idea?** - Summarise the main gist of what you read in one to three sentences. (Look at relationships between characters, author's purpose, idea of article/text)
- **Use Predicting skills** - to work out answer or outcome.
- **Keep notes for future reference** -use tabs, binders, headings. Use a method that is most useful for you.



The staff and students who are involved in the Breakfast Club would like to acknowledge the generosity of 'Bakers Delight' at Rutherford who now provide us with bread. There are many local businesses who donate their time, service or products to our school. In return we express our appreciation and hope our school community can reciprocate.



WE'RE FUNDRAISING WITH ENTERTAINMENT™

The NEW 2015 | 2016 Entertainment™ Books are here!

For every Entertainment™ Book and Entertainment™ Digital Membership we sell, \$12 contributes to our fundraising.

The new Entertainment™ Memberships are available now and are packed with thousands of up to 50% OFF and 2-for-1 offers that you can use through to 1 June 2016.

The more Memberships we sell, the more we raise! Please tell your family and friends. Thank you for your support!

Over \$20,000 worth of value for just \$[65]

There are over 2,000 offers from the best local restaurants, cafés, hotels and resorts, travel, attractions, shopping and more in the 2015/2016 Entertainment™ Book. Look through the Books at www.entertainmentbook.com.au/flickbook

Choose the Membership that suits you!

Choose the printed Entertainment™ Book with Gold Card and Vouchers, or the Digital Membership that puts the value of the Book on your Apple or Android device.

	BOOK	DIGITAL
You tend to make spontaneous dining decisions		✓
You don't have an Apple or Android smartphone	✓	
You never leave home without your smartphone		✓
Your family shares the Entertainment™ offers	✓	✓

Rutherford Technology High School P & C Association

Contact: Lexi Fitzgibbon Phone: Email: lexi.fitzgibbon@det.nsw.edu.au

To order your Book or your Digital Membership securely online visit:

www.entbook.com.au/3k4872

Alternatively, please complete your details below:

Name: _____ Phone: _____ Email: _____
 Address: _____ State: _____ Postcode: _____
 Newcastle Edition \$60 including GST: # _____ Book(s) ☐ Post my order \$10.50 TOTAL ENCLOSED \$ _____
 Payment type: ___ Visa ___ Mastercard
 Credit Card number: _____ / _____ / _____ / _____ Expiry date: _____ / _____ CVV*: _____
 Cardholder's name: _____ Signature: _____

*CVV is the 3 digits on the back of your credit card

Thanks for your support! 20% from each Book sold contributes to our fundraising.

Computer Basics



Education for Careers & Further Study

This course is designed for people with little or no experience using computers.

It takes you from learning how to turn on a computer through to word processing, using the internet, using a spread sheet, doing digital presentations and using digital equipment such as cameras and scanners



Certificate in Information, Digital Media and Technology



Certificate 1 – 10302

Course Name	Certificate in Information Technology, Digital Media and Technology	
Qualification	Certificate I	
Course Code	10302	
National Code	ICA10111	
Core Units	Operate a personal computer	Operate Word Processing applications
	Use, communicate and search on the Internet	Use digital devices
Elective Units include:	Operate Presentation packages	Use digital literacy skills to access the internet
The elective units offered will differ at each campus		

Enrolment Details

Visit www.huntertafe.nsw.edu.au/browse-courses for the application process.

You may be eligible to receive Recognition of Prior Learning. For more information please contact us.

* Information subject to change.

For more information contact:

Judy Markey

(02) 4030 2878

Donna Clark

(02) 4030 2028

hunter.careerskills@education.nsw.gov.au

huntertafe.nsw.edu.au

04712808-02-130814

**HUNTER
TAFE**

Maitland Campus Information Session / Timetable

Wednesday 24 June 2015

10:30am

C Block, Ground Floor, Room 15 (CG.15)

Google **Hunter TAFE** Call **131 225**

Connect with us





RUTHERFORD TECHNOLOGY HIGH SCHOOL

CANTEEN MENU

Effective from Term 2 - 2015



ITEM	PRICE		DRINKS	PRICE
Salad Roll	\$4.20		Moove Milk 500ml	\$3.00
Chicken Salad Roll	\$4.70		Moove Milk 300ml	\$2.20
Ham Salad Roll	\$4.70		Juice 300ml/375ml	\$2.20
Corn Meat Salad Roll	\$4.70		Water 600ml	\$2.00
Chicken Salad Sandwich	\$4.20		Small Water	\$1.00
Salad Sandwich	\$3.60		Soft Drink 600ml	\$3.20
Egg & Lettuce Sandwich	\$3.60		Soft Drink 390ml	\$2.60
Curried Egg Sandwich	\$2.80		Quench	\$1.80
Vegemite Sandwich	\$2.80		Plain Milk 600ml	\$2.00
Cheese Sandwich	\$2.80		Focus Water	\$1.80
Ham, Cheese & Tomato	\$2.90		Hot Chocolate (term 2 & 3)	\$1.50
Cheese & Tomato	\$2.60			
Corn Meat & Pickles	\$2.90			
Meat Sandwich	\$2.80		SNACKS	
Chicken Salad Wrap	\$4.70		Fresh Fruit Salad (Term 1 & 4)	\$2.50
Thai Chicken Salad Wrap	\$4.70		Fresh Water Melon (Term 1 & 4)	\$2.50
Salad Wrap	\$4.20		Deli Rock Chips	\$1.00
Meat Salad Wrap	\$4.70		JJ's Chips	\$1.00
Salad Box	\$4.80		Cheese Rice Sticks	\$1.00
Chicken Salad Box	\$5.80		Chicken Jumpy's	\$1.00
Bread Roll (extra)	.90		Eucalyptus Drops	.50c
Butter Bread	.90		Muffins	\$1.50
Toasted Sandwich (order)	.50		Finger Buns	\$1.50
Extra Fillings	.40 each		Banana Bread	\$2.40
Butter/Mayo or Mustard	.20 each			
HOT FOOD			ICE CREAMS	
Chicken Wedge/Dino	\$2.80		Billabong	\$1.50
Pop Corn Chicken	\$2.80		Paddle Pops	\$1.50
Pizza Single (Ham & P/Apple)	\$2.30		Frozen Fruits	\$2.00
Hot Dog	\$2.40		Frozen Yoghurt	\$1.70
Pizza Rounds	\$2.30		Vanilla Buckets	\$1.20
Chicken Burger	\$3.50		Paddle Pop Lemonade Twist	\$1.20
Chicken Burger w Salad	\$4.20		Juice Ice Block	\$1.00
Plain Pies	\$2.60		Milo Cups	\$2.80
Sausage Rolls	\$2.50			
Chicken & Bacon Pie	\$2.90		SAUCES	
Potato Pie	\$2.90		Tomato	.40c
Mamee Cup Noodles	\$2.00		BBQ	.40c
Chicken Gravy Roll	\$3.60		Sweet & Sour	.40c
Rissole Gravy Roll	\$3.60			
Cheese Burger	\$3.50			
Chicken Chippies (6)	\$2.80			
Chicken Nuggets (6)	\$2.80			
Garlic Bread	\$2.00			
Meat Ball Subs **NEW**	\$3.60			



Rutherford Technology High School UNIFORM SHOP

PRICE LIST

ITEM	PRICE	SIZE	QTY	TOTAL INCL GST
Girls				
Jnr Blouse Sky	28.00			
Snr Blouse Lemon	28.00			
Jnr/Snr Girls Shorts	35.00			
Jnr Skirt	48.50			
Snr Skirt	48.50			
Bootleg slacks	39.00			
Boys				
Jnr/Snr Boys Shorts	35.00			
Jnr/Snr Trousers	39.00			
Unisex				
Fleecy Jacket	40.00			
Jnr Polo	29.00			
Snr Polo	29.00			
Elastic Waist Everyday Black Shorts	35.00			
Elastic Waist Everyday Black Long Pants	39.00			
Jumpers				
Jumper	72.00			
Sports				
Jacket	65.00			
Sports Shorts Std	25.00			
Trackpant	38.00			
Sports Polo	35.00			
Others				
Scarf	20.00			
Socks 5pr	20.00			

OPENING HOURS:

TUESDAY
THURSDAY

8:00am - 12:00noon
12:30pm - 4:30pm

CANTEEN ROSTER 2015



25 May	K.Cresswell
26 May	Volunteer Required
27 May	Volunteer Required
28 May	Volunteer Required
29 May	Volunteer Required
1 June	K.Cresswell
2 June	Volunteer Required
3 June	K Hobbs
4 June	Volunteer Required
5 June	Volunteer Required

PREMIER FITNESS
and martial arts centre

Join us at Rutherford's Premier Fitness and Martial Arts Centre

- Les Mills fitness classes
- Zanshin Jujitsu
- Childcare
- Kids chill zone
- Kickboxing classes
- Kids martial arts
- Personal training

ZANSHIN JUJITSU

残心柔術

LESMILLS

Ask about our great rates TODAY!
No lock in contracts

0401 199 913
11 Bradmill Ave, Rutherford

The Royal Society for the Blind

Low vision aids & professional services:

- Occupational Therapy
- Social Work
- Orientation & Mobility
- Low vision aids
- Adaptive technology
- Social groups & programs

(02) 4956 2282



151 Lambton Road
Broadmeadow
NSW 2292
www.rsb.org.au
rsbhunter@rsb.org.au

NSW NDIS Provider Registration
Number: 25405704
HACC and DVA Provider

Rutherford Technology High School has launched its Official Facebook Page – just go to Facebook and look for “Rutherford Technology High School NSW Official Site” and click on “Like”.

We will be using the Facebook page to keep everyone informed about events at the school, important dates for your diary, and general information about the school.

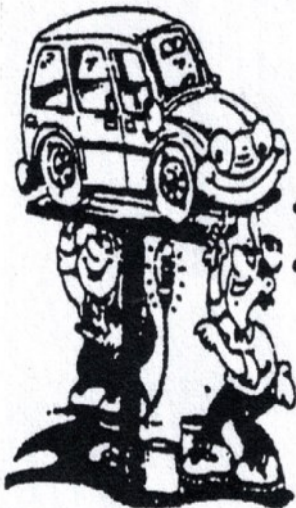
Link: <http://www.facebook.com/RutherfordTechnologyHighSchool>



RUTHERFORD MECHANICAL REPAIRS

ALL MECHANICAL REPAIRS

- Fuel Injection · LPG Servicing
- Pink & Blue Slips
- Manufactures Handbook Services
- MVR License Number 23961



Call **DAVID** on **49325 982**

27 JOHN STREET, RUTHERFORD

**Just Off Hwy Opposite
Telarah Railway Station.**



CHANGES TO STUDENT INFORMATION

Student's Surname: _____

Student's First Name: _____

Year: _____ Date today: _____

New Address: _____

Postcode: _____

New Carer Information: _____

(Carer changes that may need to be made to current records)

New Carer Phone Numbers: _____

New Home Phone Number **Mother:** _____ **Father:** _____

New Mobile Number **Mother:** _____ **Father:** _____

New Work Number **Mother:** _____ **Father:** _____

New Email Address _____

New Emergency Contacts:

Name: _____ Name: _____

Home: _____ Home: _____

Mobile: _____ Mobile: _____

Relationship to student: _____ Relationship to student: _____

Name of person making changes _____ relationship to student _____

**SPORT ON THURSDAY IS
COMPULSORY**

**IF YOU NEED YOUR CHILD TO
LEAVE SCHOOL TO ATTEND AN
APPOINTMENT, PLEASE ENSURE
THAT YOU SEND A NOTE WITH
THEM IN THE MORNING. THE
STUDENT WILL THEN BE ISSUED
WITH AN EARLY LEAVERS PASS.**



PLEASE TAKE THE TIME TO COMPLETE THE SURVEY BELOW AND RETURN TO FRONT OFFICE

Rutherford Technology High

Canteen Survey

If the school had a pre-paid on-line ordering system, would you use it?

☐ Yes | ☐ NO

Do you use the canteen? ☐ Yes | ☐ NO

If not, why not?

Breakfast Items:

Hash Browns	<input type="checkbox"/> Yes <input type="checkbox"/> No
Cheese Toasties'	<input type="checkbox"/> Yes <input type="checkbox"/> No
Cheese & Bacon Rolls	<input type="checkbox"/> Yes <input type="checkbox"/> No
Banana Bread	<input type="checkbox"/> Yes <input type="checkbox"/> No
Variety of Muffins	<input type="checkbox"/> Yes <input type="checkbox"/> No
Yoghurt + Fruit	<input type="checkbox"/> Yes <input type="checkbox"/> No
UP & GO'S	<input type="checkbox"/> Yes <input type="checkbox"/> No

Sandwiches/Rolls: (White & Multigrain)

Salad (lettuce,tomato,beetroot,cheese, cucumber,carrot,onion,egg,avocado)	<input type="checkbox"/> Yes <input type="checkbox"/> No
Meat (chicken,ham,roast beef) &Salad	<input type="checkbox"/> Yes <input type="checkbox"/> No
Egg & Lettuce	<input type="checkbox"/> Yes <input type="checkbox"/> No
Ham/Cheese/Tomato	<input type="checkbox"/> Yes <input type="checkbox"/> No
Chicken/Lettuce/Mayo	<input type="checkbox"/> Yes <input type="checkbox"/> No

Wraps:

Sweet Chilli Tender/lettuce/mayo	<input type="checkbox"/> Yes <input type="checkbox"/> No
Chicken Caesar	<input type="checkbox"/> Yes <input type="checkbox"/> No
Meat + Salad	<input type="checkbox"/> Yes <input type="checkbox"/> No
Salad	<input type="checkbox"/> Yes <input type="checkbox"/> No
Baby Wraps	<input type="checkbox"/> Yes <input type="checkbox"/> No

SUB'S (on a hotdog roll):

Meatballs	<input type="checkbox"/> Yes <input type="checkbox"/> No
Hot Dog	<input type="checkbox"/> Yes <input type="checkbox"/> No
Hot chicken/gravy	<input type="checkbox"/> Yes <input type="checkbox"/> No
Hot beef/gravy	<input type="checkbox"/> Yes <input type="checkbox"/> No

Salad Tubs/Bowls:

Chicken Caesar	<input type="checkbox"/> Yes <input type="checkbox"/> No
Meat + Salad	<input type="checkbox"/> Yes <input type="checkbox"/> No
Deluxe Salad	<input type="checkbox"/> Yes <input type="checkbox"/> No

Hot Food:

Sausage Roll	<input type="checkbox"/> Yes <input type="checkbox"/> No
Pies (Plain & Potato)	<input type="checkbox"/> Yes <input type="checkbox"/> No
Chicken Burger (Breast chicken, lettuce, mayo)	<input type="checkbox"/> Yes <input type="checkbox"/> No
Spaghetti Bolognese (Bowl)	<input type="checkbox"/> Yes <input type="checkbox"/> No
Beef Hamburger (rissole, lettuce, tomato, beetroot, cheese & sauce)	<input type="checkbox"/> Yes <input type="checkbox"/> No
Pizza Subs (meatballs,cheese)	<input type="checkbox"/> Yes <input type="checkbox"/> No
Wedges	<input type="checkbox"/> Yes <input type="checkbox"/> No
Nacho's	<input type="checkbox"/> Yes <input type="checkbox"/> No
Spinach + Ricotta Rolls	<input type="checkbox"/> Yes <input type="checkbox"/> No
Corn on the Cob	<input type="checkbox"/> Yes <input type="checkbox"/> No
Chicken Goujon's	<input type="checkbox"/> Yes <input type="checkbox"/> No
Fried Rice	<input type="checkbox"/> Yes <input type="checkbox"/> No
Garlic Bread	<input type="checkbox"/> Yes <input type="checkbox"/> No

Would you like to see "THEME DAYS"

☐ Yes | ☐ No

<u>MON</u>	<u>TUES</u>	<u>WED</u>	<u>THURS</u>	<u>FRI</u>
e.g. Butter Chicken				