



RUTHERFORD

TECHNOLOGY HIGH SCHOOL

RESPECT
RESPONSIBILITY
COMMITMENT

30 Avery Street
Rutherford NSW 2320
Phone: 02 4932 5999
Email: rutherford-h.school@det.nsw.edu.au
Website: <https://rutherford-h.schools.nsw.gov.au>

High Potential & Gifted Education (HPGE) 2025 Information Evening

Thursday 4th April 2024

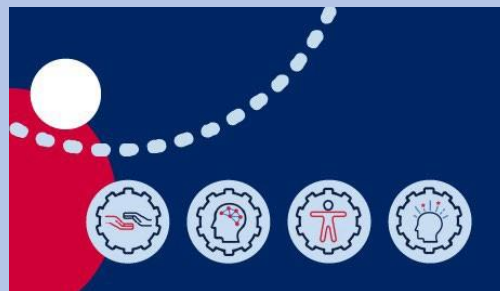
5:00pm to 6:00pm
RTHS MPC

At Rutherford Technology High School we believe in supporting every student to reach their education potential. We provide academic programs with differentiated learning designed specifically to cater for the needs of our high performing and gifted students. In 2024 we will offer up to 3 HPGE classes, these classes are aimed at raising expectations and building student capabilities.

Our High Potential and Gifted Education (HPGE) programs have been designed to support students who learn in a variety of ways. The high quality learning opportunities are available to students from all backgrounds in all inclusive manner. All programs are created based on evidence informed practice that is current and relevant which leads to confidence, enjoyable learning and academic success.

APPLICATIONS FOR 2025 WILL OPEN SOON

Come along to the information night on Thursday 4th April 2024 to gain an insight into the benefits of the program for your child.



If you would like further information about the Rutherford Technology High School 2025 HPGE Intake please contact our Head Teacher Learning & Support, Mrs Naomi Scoringe, via the school administration office on 49325999 or email: rutherford-h.school@det.nsw.edu.au

